



PRICE LIST

COVERING AND
INFLATION

CLADDING

OPENINGS AND
AUTOMATION
CONTROL

STRUCTURAL
PARTS

DOORS

HEATING AND
INDOOR CLIMATE

CULTIVATION
SYSTEMS AND
ACCESSORIES

IRRIGATION AND
FERTIRRIGATION

HOBBY
AND GARDEN



EUROPROGRESS GROUP

Pag. 5

HOW TO REACH US

Pag. 6

SALES CONDITIONS

Pag. 194

PARTNERS AND AFFILIATES

Pag. 196

COVERING AND INFLATION

9

CLADDING

23

OPENINGS AND AUTOMATION CONTROL

33

STRUCTURAL PARTS

55

DOORS

89

HEATING AND INDOOR CLIMATE

105

CULTIVATION SYSTEMS AND ACCESSORIES

157

IRRIGATION AND FERTIRRIGATION

173

HOBBY AND GARDEN

179



Europrogress Group is an Italian leading company in the greenhouse manufacturing sector and in the commercialization of systems and technologies for protected crops.

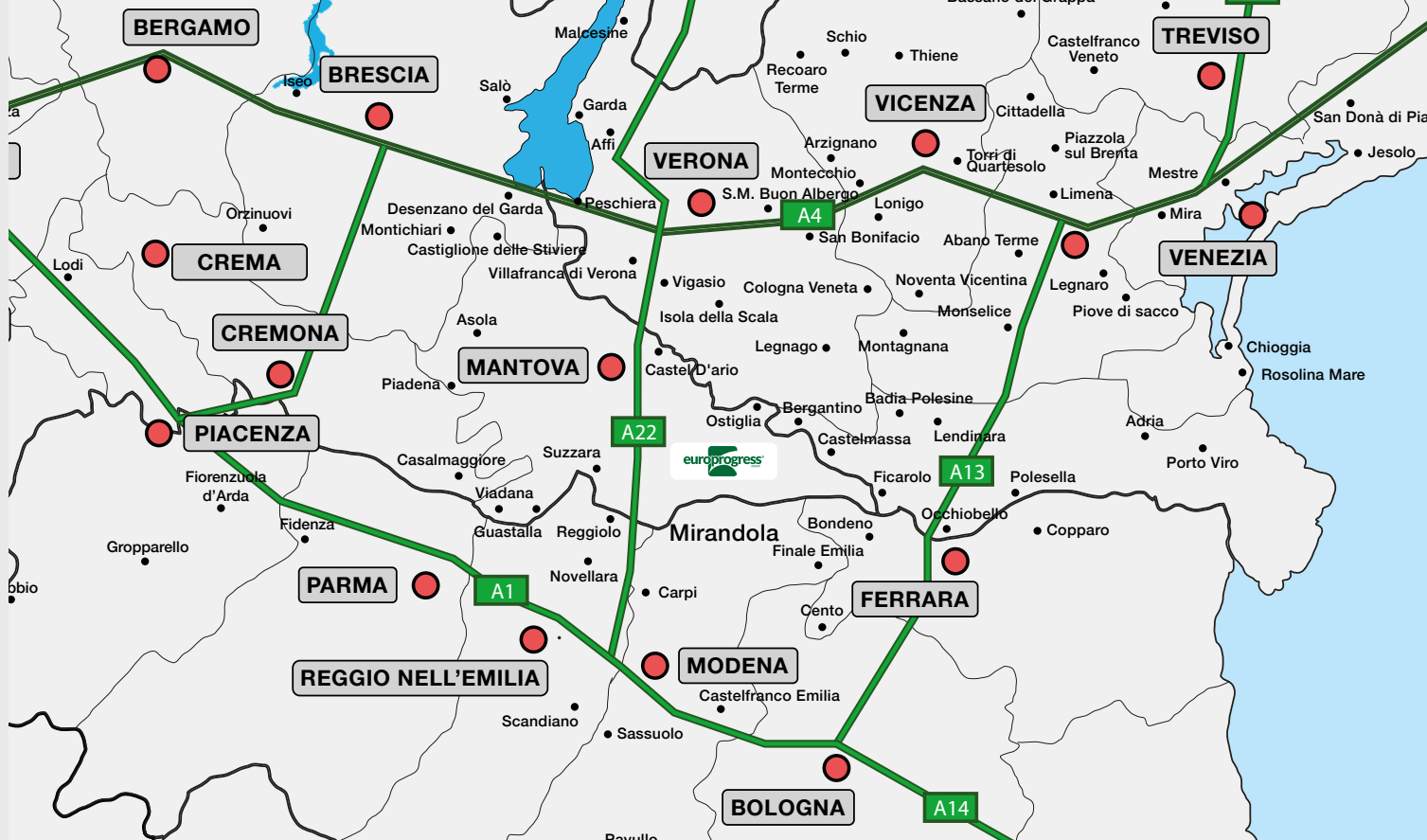
Europrogress follows each installation from the design to the assembly, along with an excellent aftersales assistance service that has always guaranteed competence, satisfaction and reliability.



europrogress.it

With over 1,000 hectares of surface covered around the world, Europrogress boasts the experience of a constant and widespread aftersales service.

Continuous aftersales assistance ensures timely interventions to better protect customers.



By car

A1 Autostrada del Sole

Exit Modena Nord then follow the freeway towards Verona for about 30 Km (exit 10, Mirandola - Verona)

A22 Autostrada del Brennero

Exit Reggiolo Rolo then follow the signs for Mirandola.

By train

Bologna - Verona line.

A bus service is available that connects the FS Station with the scheduled stops in the centre of Mirandola.

By plane

Bologna Airport (approximately 55 km)

Verona Airport (approximately 77 km)

Forlì Airport (approximately 128 km)





COVERING AND INFLATION

COVERING FILMS

SKY EVO 8 LAYERS



AVAILABLE

SKY AD EVO - EVO 7504 AC

Transparent polyethylene film 180 µm
 8 anti-condensation layers - 33-45 months
 Transmitted light >91%
 Diffused light 2%

Mt. 4,50
 Mt. 7,00
 Mt. 8,50
 Mt. 9,00
 Mt. 10,50
 Mt. 11,00
 Mt. 11,50
 Mt. 12,50
 Mt. 14,00

PRODUCER	PLASTIKA KRITIS SA
PRODUCT	KRITIFIL EVO 7504 AC

DESCRIPTION	8-layer, long-life, thermic, colorless, high strength, clear, anti-dripping, anti-fogging greenhouse film
RESIN(S)	m-LLDPE, EVA, LDPE
NOMINAL THICKNESS (mic)	180
AVERAGE THICKNESS TOLERANCE	± 5% on nominal thickness
THICKNESS TOLERANCE AT ANY POINT	± 15%
SULFUR / CHLORINE LIMITS (ppm)	700 / 150

MECHANICAL PROPERTIES	TYPICAL VALUES	VARIATION	TEST METHOD
TENSILE STRENGTH AT BREAK (MPa)			
MACHINE DIRECTION	30	-5%	EN ISO 527-3
TRANSVERSE DIRECTION	30	-5%	EN ISO 527-3
ELONGATION AT BREAK (%)			
MACHINE DIRECTION	600	-5%	EN ISO 527-3
TRANSVERSE DIRECTION	680	-5%	EN ISO 527-3
OPTICAL PROPERTIES	TYPICAL VALUES	VARIATION	TEST METHOD
Total light transmission (400-700 nm)(%)	>91		ASTM D 1003
Diffusion (400-700 nm) (%)	18	± 2%	ASTM D 1003
UV transmission (300-390 nm) (%)	n/a		INTERNAL METHOD
Infrared Transmission (7-13 µ) (%)	< 17		EN 13206 § 8.8

SKY AD 3 LAYERS



AVAILABLE, MIN. 10 TON

SKY AD - TUV 3992 AD - FILMS ≤ 11,50 MT.

Polyethylene film - Transparent 180 µm
 3 anti-condensation layers - 33-45 months
 Transmitted light 90%
 Diffused light 16%

Mt. 4,50
 Mt. 7,00
 Mt. 8,50
 Mt. 9,00
 Mt. 10,50
 Mt. 11,50

SKY AD - TUV 3954 AD - FILMS ≥ 12,50 MT.

Polyethylene film - Transparent 190 µm
 3 anti-condensation layers - 33-45 months
 Transmitted light 90%
 Diffused light 16%
 Without metallocene

Mt. 12,50
 Mt. 14,00

PRODUCER	PLASTIKA KRITIS SA
PRODUCT	KRITIFIL TUV 3992 AD

DESCRIPTION	3-layer, long-life, thermic, colorless, high strength, high clarity, anti-dripping, greenhouse film
RESIN(S)	m-LLDPE, EVA, LDPE
NOMINAL THICKNESS (mic)	180
AVERAGE THICKNESS TOLERANCE	± 5% on nominal thickness
THICKNESS TOLERANCE AT ANY POINT	± 15%

MECHANICAL PROPERTIES	TYPICAL VALUES	VARIATION	TEST METHOD
TENSILE STRENGTH AT BREAK (MPa)			
MACHINE DIRECTION	27	-5%	EN ISO 527-3
TRANSVERSE DIRECTION	30	-5%	EN ISO 527-3
ELONGATION AT BREAK (%)			
MACHINE DIRECTION	600	-5%	EN ISO 527-3
TRANSVERSE DIRECTION	600	-5%	EN ISO 527-3
IMPACT RESISTANCE (FLAT) (gr)	1500	-5%	ISO 7765-1 (A)

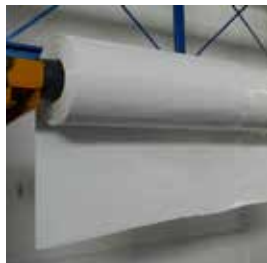
OPTICAL PROPERTIES	TYPICAL VALUES	VARIATION	TEST METHOD
Total light transmission (400-700 nm)(%)	90-91		EN 2155-5
Diffusion (400-700 nm) (%)	18	± 2%	EN 2155-9
UV transmission (300-390 nm) (%)	n/a		INTERNAL METHOD
Thermal Conductivity (W/ (m* °K)	0.32 - 0.35		ASTM E1530
Infrared Transmission (7-13 µ) (%)	< 17		EN 13206 § 8.8

COVERING FILMS

POLYETHYLENE FILMS

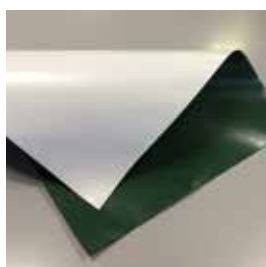


CODE	DESCRIPTION	AVAILABLE SIZES
SKY TUV 3996	Transparent polyethylene film 180 µm 3 layers 33-45 months Transmitted light 90% Diffused light 16%	Mt. 2,00 Mt. 2,50 Mt. 3,50
SKY ROSES AD TUV 3967 AD	Transparent polyethylene film 190 µm 3 layers Anti-condensation Sulphur resistance 33-45 months Transmitted light 87% Diffused light 60%	To be checked if in stock MINIMUM ORDER 8 TON
SKY DIFFUSION AD TUV 3943 AD	Transparent polyethylene film 190 µm 3 layers Anti-condensation 33-45 months Transmitted light 88% Diffused light 50%	To be checked if in stock MINIMUM ORDER 8 TON
SKY CULTIVATION AD TUV 3750 AD	Transparent polyethylene film 190 µm 3 layers Anti-condensation 22-33 months Transmitted light 90% Diffused light 25%	To be checked if in stock MINIMUM ORDER 8 TON



CODE	DESCRIPTION	AVAILABLE SIZES
SKY WHITE AD W 6503 AD	Opaque white colour Polyethylene film 200 µm 3 layers Anti-condensation 33-45 months Transmitted light 30%	Mt. 10,50 Mt. 12,50 Mt. 14,00

PVC FILMS



CODE	DESCRIPTION	AVAILABLE SIZES
Fireproof PVC FILM 650 gr. art. 745	Colours: white, ivory, grey, green 650 gr./m ² Fireproof - Cl. 2	On request
Art. 745 Treated	Hem, VL80 eyelet screws or lanyard at the top	On request
PVC FILM 650 gr. Art. 741	White, ivory, grey, green 650 gr./m ²	On request
Art. 741 Treated	Hem, VL80 eyelet screws or lanyard at the top	On request
PVC Film 720 gr. Art. AGRI 720	Bicoloured green/white or dark grey/white	On request
PVC Film 720 gr. Treated	Hem, VL80 eyelet screws or lanyard at the top	On request
PVC FILM 620 gr.	Bicoloured green upper part/ black lower part	On request



CODE	DESCRIPTION
REDUSOL 20 Lt.	Liquid solution to opacify covering films and greenhouse solar diffusion Dilution 1:1,5→82% screening Dilution 1:4→67% screening Dilution 1:10→23% screening



CODE	DESCRIPTION
REDUCLEAN 25 Lt.	Liquid solution to clean covering films. Capacity 25 lt. The ratio is 1 liter of ReduClean in 7 liters of water (for 1 hectare you need 1000-1500 litres of solution to spray).



CODE	DESCRIPTION
GLASS WOOL 50mm	Mats width 1,20 mt Density 12 Kg/m ³



CODE	DESCRIPTION
FILM TAPE	Adhesive tape to repair tears and holes in film coverings Width 100 mm - Length 33,00 mt.



FILM COVERING CLEANING



CODE	DESCRIPTION
HLT4 TELESCOPIC NOZZLE 2,40-4,20 MT.	Telescopic nozzle in aluminium Length min. 2,4/max 4,2 mt N. 2 sections Weight 2,7 Kg

HLT6 TELESCOPIC NOZZLE 2,40-6,20 MT.	Telescopic nozzle in aluminium Length min. 2,4/max 6,2 mt N. 3 sections Weight 3,4 Kg
---	---



CODE	DESCRIPTION
HSRL8 ROTATING BRUSH 80 CM	Working width 80 cm Min. working scope 50 bar - 9 Lt/min.



CODE	DESCRIPTION
HIGH PRESSURE HOSE	High pressure hose to connect the generator to the brush.



CODE	DESCRIPTION
L11120M PRESSURE GENERATOR	Cold water pressure washer with single phase motor 2,2 kW 3 ceramic pistons pump Capacity 11 Lt./min. - max 120 bar adjustable



CODE	DESCRIPTION
HPK-E FULL EQUIPMENT FOR FILM COVERING CLEANING	230V- 2,0 Hp electric motor Normal water 660Lt/hour - 0-50 bar Demineralised water 180Lt/hour - 20 bar Feeding from water supply Telescopic rod 4,0 mt. Hose 25 mt. Fixed brush 60cm Litre meter

ALUMINIUM PROFILES AND PVC FILM FIXINGS



CODE	DESCRIPTION
ALU S Single aluminium	Aluminium shaped profile in bars for fixing the covering and side films



CODE	DESCRIPTION
ALU D Double aluminium	Aluminium shaped profile in bars for fixing the covering and side films



CODE	DESCRIPTION
ALU T Triple aluminium	Aluminium shaped profile in bars for fixing the covering and side film + net fixing



CODE	DESCRIPTION
ALU Ø 50mm	Aluminium shaped profile in bars for the winding of the cladding film of the side openings



CODE	DESCRIPTION
PVC "M+F" Code R08T2	PVC shaped extrusion in bars for fixing the covering and side film

AT version For temperatures above 55°C.



CODE	DESCRIPTION
PVC R Code RT10F	PVC shaped extrusion in bars for fixing the covering and side film

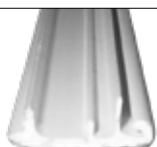
AT version For temperatures above 55°C



CODE	DESCRIPTION
PVC F Code R18F	PVC shaped profile in bars for fixing the covering and side film



ALUMINIUM PROFILES AND PVC FILM FIXINGS



CODE

DESCRIPTION

PVC BIASION

PVC shaped extrusion in bars for fixing the covering and side film



CODE

DESCRIPTION

IRON EXTRUSION

Steel shaped profile in bars for fixing the covering and side film



CODE

DESCRIPTION

C ZIG-ZAG PROFILE

Steel shaped profile in bars for fixing the covering and lateral film in L=4000 mm. bars



CODE

DESCRIPTION

ZIG-ZAG CLIP

Steel shaped clip profile for fixing plastic film in countries with high diurnal temperatures adaptable on Europrogress aluminium profile - L=2000 mm

COVERING FILM TENSIONING SYSTEMS



CODE	DESCRIPTION
COILER TUBE 30x30x2x6000	Film coiling and tensioning tube for ridge and lateral sides

COILER TUBE 30x30x3x6000	Film coiling and tensioning tube for ridge and lateral sides
-------------------------------------	--



CODE	DESCRIPTION
COILER JUNCTION 30x30x2	Full connector 25x25x200

COILER JUNCTION 30x30x3	Film coiling and tensioning tube for ridge and lateral sides
------------------------------------	--



CODE	DESCRIPTION
GUTTER COILER BRACKET + 2 HOLES PLATE	Film tensioning support bracket to fasten in the central or lateral gutter



CODE	DESCRIPTION
PILLAR LATERAL COILER BRACKET Ø60	Film tensioning support bracket to be fastened to the lateral pillar Ø60 mm for lateral opening



CODE	DESCRIPTION
PILLAR FRONTAL COILER BRACKET Ø 60	Film tensioning support bracket to be fastened to the gable pillar Ø60 mm for frontal opening



CODE	DESCRIPTION
OMEGA BRACKET WITH COILER BRACKET FOR GUTTER WINDOW	Film tensioning support bracket on the hinge of the gutter window



CODE	DESCRIPTION
SIMPLE COILER BLOCK	Film tensioning block bracket for lateral window Ø60, 80x50, 80x80 mm pillar

COVERING FILM TENSIONING SYSTEMS



CODE	DESCRIPTION
DOUBLE POST ANGULAR COILER BLOCK	Film tensioning block for lateral windows and gables Ø60, 80x50, 80x80 mm pillar19



CODE	DESCRIPTION
LATERAL GUTTER BREAKER BLOCK	Film tensioning breaker block for lateral gutter



CODE	DESCRIPTION
CENTRAL GUTTER BREAKER BLOCK	Film tensioning breaker block for central gutter



CODE	DESCRIPTION
PILLAR BREAKER BLOCK Ø60 80x50 - 80x80	Film tensioning breaker block for an intermediate pillar without central gutter



CODE	DESCRIPTION
COIVER BLOCK KEY	Film tensioning block handle



CODE	DESCRIPTION
CENTRAL BREAKER KEY	Intermediate film tensioning block handle

GUTTER END WITHOUT DOWNSPOUT FITTING



CODE	DESCRIPTION
SIDE GUTTER TENSIONING SYSTEM N. 1 tensioning block	Application to the left or right gutter (to be communicated when ordering)



CODE	DESCRIPTION
CENTRAL GUTTER TENSIONING SYSTEM N. 2 tensioning block	Application to the central gutter

CODE	DESCRIPTION
CENTRAL GUTTER TENSIONING SYSTEM N. 1 tensioning block	Application to the central gutter

GUTTER END WITH DOWNSPOUT FITTING



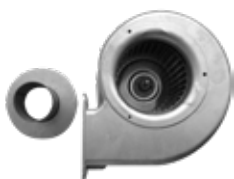
CODE	DESCRIPTION
SIDE GUTTER END FOR TENSIONING SYSTEM N. 1 tensioning block	Application to the lateral left or right gutter (to be communicated when ordering)



CODE	DESCRIPTION
CENTRAL GUTTER WITH TENSIONING SYSTEM N. 2 tensioning block	Application to the central gutter

CENTRAL GUTTER END WITH TENSIONING SYSTEM N. 1 tensioning block	Application to the central gutter
--	-----------------------------------

FILM INFLATION



CODE	DESCRIPTION
SMALL SINGLE-PHASE TURBINE	Application for the inflation of ridge covering and lateral walls Ø60 mm flange included Capacity 190 m ³ /h Power consumption 82 W Voltage 230 V



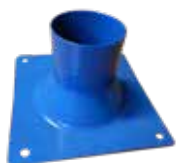
CODE	DESCRIPTION
TURBINE INFLATION SUPPORT	Single-phase turbine fixing system to the Ø60 mm or Ø76 mm arch



CODE	DESCRIPTION
BIG SINGLE-PHASE TURBINE	Application for the inflation of ridge covering and lateral walls Capacity 400 m ³ /h Power consumption 50 W Voltage 230 V



CODE	DESCRIPTION
THREE-PHASE TURBINE	Application for the inflation of ridge covering and lateral walls Capacity 500 m ³ /h Power consumption 0.12 W Voltage 400V



CODE	DESCRIPTION
REDUCTION Ø60mm	Reduction for three-phase turbine to inflation hose Ø63mm



CODE	DESCRIPTION
INFLATION CONNECTOR Ø60mm	Simple connector for inflation system



CODE	DESCRIPTION
INFLATION CONNECTOR WITH NON-RETURN MEMBRANE Ø60mm	Non-return valve



CODE	DESCRIPTION
INFLATION HOSE Ø63x6000mm	Inflation system by-pass hose
INFLATION HOSE Ø82x10000mm	Inflation system by-pass hose



CODE	DESCRIPTION
CLAMP Ø50/70mm	Inflation hose fixing system to the connector
CLAMP Ø80mm	Inflation hose fixing system to the connector



CODE	DESCRIPTION
CYCLIC TIMER TM1C	Cyclic timer for 1-2 single
CYCLIC TIMER TM2C	Cyclic timer for 3-6 single-phase turbines
CYCLIC TIMER TM3C	Cyclic timer for 1-5 three-phase turbines

FILM INFLATION



CODE

DESCRIPTION

**PVC HOSE Ø63 mm
L=3000 mm**

Hose for serial canalization of the inflation system

**PVC HOSE Ø63 mm
L=2000 mm**

Hose for serial canalization of the inflation system



CODE

DESCRIPTION

"T" CONNECTOR Ø63 mm

Connector for serial canalization of the inflation system



CODE

DESCRIPTION

BEND 90° Ø63 mm

Bend for serial canalization of the inflation and external aspiration system



CODE

DESCRIPTION

CAP Ø63 mm

Hose closing cap



CLADDING



SEMIRIGID MATERIALS FOR CLADDING AND COVERING

ALVEOLAR POLYCARBONATE 6 MM



CODE

**ALVEOLAR PLC
6 MM (2P)**

DESCRIPTION

Sheets 2,10 mt wide
High light transmission
UV Stabilised
Transparency preserved over time
Resistance to snow and wind
Energy saving due to the double walls with air interspace.
Length 4,00-5,00-6,00 mt

TRANSPARENT CORRUGATED POLYCARBONATE



CODE

WAVY PLC 76/18

DESCRIPTION

Sheets 1,265 mt. wide (usable 1,10)
Sheets in compact clear polycarbonate (transparent)
Greek fret 76/18 – Thickness 0,8 mm
Weight 1,60 Kg/m²



Sheets 2,10 mt wide - High light transmission Opacity to sunrays. Transparency preserved over time. Resistance to snow and wind. Energy saving due to the double walls with air interspace.

CODE

ALVEOLAR PLC 8 MM (2P) Length 6,00 mt

ALVEOLAR PLC 10 MM (4P) Length 6,00 mt

ALVEOLAR PLC 16 MM (5P) Length 6,00 mt



Polycarbonate sheet junction profile for a solid fixing and a proper wall alignment. Rod length 6.00 m.

CODE

PROFILE H 6 mm

PROFILE H 8-10 mm

PROFILE H 16 mm



CODE

DESCRIPTION

**WAVE PLC or
FRETTED PLC
76/18 OPAL**

Sheets 1,265 mt. wide (usable 1,10)
Greek fret 76/18 - Thickness 0,8 mm
Weight 1,60 Kg/m²



CODE

DESCRIPTION

WHITE ONDEX

Sheets 1,133 mt. wide (usable 1,00)
Sheet in semi rigid PVC bi-oriented.
White opaque colour
Wave 77/20 - Thickness 0,9 mm.
Weight 1,45 Kg/m²

CODE

DESCRIPTION

**POLYESTER
FIBERGLASS**

Sheets 1,650 mt. wide (usable 1,50)
Laminated in polyester resin UV stabilized and reinforced with fiberglass.
Wave 76/18
Weight 1,45 Kg/m²



CODE	DESCRIPTION
SHAPED SPONGE	Shaped sponge air anti infiltration Application for corrugated and fretted profiles

CODE	DESCRIPTION
COMPACT PLC 4 mm	Sheets in compact clear polycarbonate (transparent) Weight 1,60 Kg/m ²

COLOURED POLYCARBONATES



CODE	DESCRIPTION
ALVEOLAR PLC Lenght 6,00 mt	Sheets 2,10 mt. wide UV stabilised Maximum lightness Resistance to snow and wind Energy saving due to the double walls with air interspace



CODE	DESCRIPTION
ALVEOLAR PLC Lenght 6,00 mt	Sheets 2,10 mt. wide UV stabilised Maximum lightness. Resistance to snow and wind Energy saving due to the double walls with air interspace

SANDWICH PANEL



Panel 1mt wide. Insulated panel in fretted profile with internal/external pre-painted steel. Cavity in polyurethane. Standard RAL

CODE

SANDWICH WALL PANEL 30mm

SANDWICH WALL PANEL 40mm

SANDWICH WALL PANEL 80mm

SANDWICH WALL PANEL 100mm



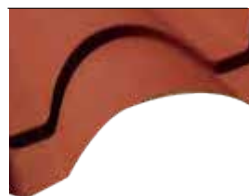
Panel 1,00mt wide. Insulated panel in fretted profile with internal/external pre-painted steel. Cavity in polyurethane. Standard RAL

CODE

FRETTED SANDWICH PANEL / RIDGE 40mm

FRETTED SANDWICH PANEL / RIDGE 80mm

FRETTED SANDWICH PANEL / RIDGE 100mm



CODE

DESCRIPTION

**SANDWICH
PANEL TILE
SHAPE SHEET
40mm**

Panel 1,00 mt wide.
Insulated panel in fretted profile with internal/
external pre-painted steel.
Cavity in polyurethane.
RAL red tile shaped sheet

SEMIRIGID MATERIALS FOR CLADDING AND COVERING

SANDWICH PANEL

Accessories for the ridge panel, consisting of:
Self-drilling screw
Washer
Caps

CODE

MOUNTING KIT 40mm

MOUNTING KIT 100mm



CODE

DESCRIPTION

**HALF RIDGE
5G**

Shaped sheet for the junction of the panel to the ridge.
2 sheets necessary for each ridge section .

CODE

DESCRIPTION

BOTTOM SHEET

Shaped sheet for the bottom closing on the wavy panel ridge of L=1000 mm

GLASS



CODE	DESCRIPTION
FLOAT GLASS 4mm	Transparent glass
TEMPERED FLOAT GLASS 4mm	Anti-shock thermally tempered transparent glass
STRATIFIED GLASS 3+3	Double glass with airspace film
INSULATED GLASS 4-9-4	Double glass with cavity for a better thermal insulation
PRINTED GLASS (C) 4mm	Transparent glass with "orange peel" superficial texture. Thermally tempered for anti-shock purposes
PRINTED TEMPERED GLASS (C) 4mm	

SEMIRIGID MATERIALS FOR CLADDING AND COVERING

GLASS



CODE	DESCRIPTION
ALUMINIUM GLAZING BEAD PROFILE (Cod. PR45)	Shaped vertical glass-holding profile in aluminium (Code PR45) Standard bar L=6050mm
	White PVC seal (B2N)
	Black rubber seal
GLASS-HOLDING "Z" CROSSBAR	Pre-painted Z profile



CODE	DESCRIPTION
ADHESIVE FOAM 50 MM	Glass support sponge for profiles

SHADING NETS / ANTI-HAIL / ANTI-INSECT



Nets woven in monofilament yarn, made with high density polyethylene polymers and treated according to the UNIPLAST regulations. – Available colours: green and black – UV stabilized – Standard sizes 100-150-200-250-300-400-450-500-600 cm (Bigger sizes made available by sewing)

CODE
30% SHADING
50% SHADING
75% SHADING
90% SHADING



CODE	DESCRIPTION
ANTI-HAIL 20% SHADING	High density polyethylene nets PEHD UV-stabilized. Colours: black, crystal. Accessories and processing: net stretching clips, creasing. Up to a 535 cm frame. Bigger sizes made available by sewing.



High density polyethylene nets PEHD UV-stabilised. Colours: crystal.
Accessories and processing: eyelets, cuff execution, creasing.
Standard sizes 100-120-150-200-250-300-400 cm (Bigger sizes made available by sewing)

CODE

ANTI-INSECT NET 16/10

ANTI-INSECT NET 20/10

ANTI-DROSOPHILA NET 8/10

ANTI-BUMBLEBEES NET (pollination)

CODE	DESCRIPTION
------	-------------



NET STRETCHING CLIPS

Plastic clip for net fixing

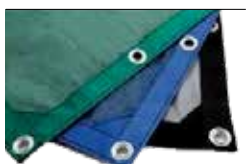


Accessories for shading net fixing

CODE

CUFF to insert tubes or ropes

CUFF WITH INSERTED ROPE Ø4mm



Accessories for shading net fixing

CODE

INSERT for eyelets

EYELETS with 10mm opening

SHADING NETS / ANTI-HAIL / ANTI-INSECT



CODE

HINGE H=2,00 MT**HINGE H=2,50 MT**

CODE

DESCRIPTION

**ELASTIC ROPE
Ø4 mm**

CODE

DESCRIPTION

**ELASTIC ROPE
Ø8 mm**U.V. protection
110% extension**ROPE
Ø6 mm**

Side openings protection rope



OPENINGS AND AUTOMATION CONTROL

RIDGE OPENINGS



CODE	DESCRIPTION
THREE-PHASE RIDGE MOTOR	Power consumption 0,37 kW – 3ph Voltage 420V – 1A Class S1 protection IP55 Stainless steel axis Ø27 mm Application for ridge and gutter openings



CODE	DESCRIPTION
SINGLE-PHASE RIDGE MOTOR	Power consumption 0,37 kW – 1ph Voltage 230V – 3,9° Class S1 protection IP55 Stainless steel axis Ø27 mm Application for ridge and gutter openings



CODE	DESCRIPTION
STRAIGHT TOOTHED RACK	Application for ridge openings 20/10 L=1313 mm

CODE	DESCRIPTION
BENT TOOTHED RACK	Application for ridge openings External denture L=1313 mm



CODE	DESCRIPTION
TOOTHED RACK ASSEMBLY d.32 mm (Brown)	Sleeve block + pinion for toothed rack For Ø32 o Ø33,7 transmission, to be communicated when ordering



CODE	DESCRIPTION
TOOTHED RACK ASSEMBLY d.33,7 mm (Black)	Sleeve block + pinion for toothed rack For Ø32 o Ø33,7 transmission, to be communicated when ordering

RIDGE OPENINGS



CODE	DESCRIPTION
RIDGE MOTOR PLATE	Fixing system of the arc ridge motorized devices Ø60 and Ø80 mm.



CODE	DESCRIPTION
U BOLT Ø76 mm	RIDGE MOTOR FIXING N. 2 for each fixing plate

U BOLT Ø60 mm	RIDGE MOTOR FIXING N. 2 dadi for each fixing plate
----------------------	---



CODE	DESCRIPTION
SQUARE HOLE STRAIGHT RACK	Application for ridge openings L=1300 mm

ROUND HOLE STRAIGHT RACK	Application for ridge openings L=1300 mm
---------------------------------	--



CODE	DESCRIPTION
SQUARE HOLE BENT RACK	Application for ridge openings L=1200 mm

ROUND HOLE BENT RACK	Application for ridge openings L=1200 mm
-----------------------------	--

RIDGE OPENINGS



CODE	DESCRIPTION
------	-------------

SQUARE TOOTH PINION Application for square hole rack
N. 14 cogs Ø32 mm



CODE	DESCRIPTION
------	-------------

ROUND TOOTH PINION Application for round hole rack
N. 13 cogs Ø32 mm



CODE	DESCRIPTION
------	-------------

SLEEVE FOR PERFORATED RACK Pinion blocking system on rack



CODE	DESCRIPTION
------	-------------

IRON TRANSMISSION SUPPORT FOR HOSE Ø60 Transmission hose fixing system Ø32 mm and Ø33,7 mm on Ø60 mm arch



CODE	DESCRIPTION
------	-------------

IRON TRANSMISSION SUPPORT FOR HOSE Ø76 Transmission hose fixing system Ø32 mm and Ø33,7 mm on Ø76 mm arch

RIDGE OPENINGS



CODE	DESCRIPTION
------	-------------

RACK COLLAR Rack collar for connection to the opening arm on the ridge / gutter window 25x25mm



CODE	DESCRIPTION
------	-------------

WINDOW HINGE Hinge for roof opening, gutter and double ridge windows



CODE	DESCRIPTION
------	-------------

4 HOLES PROFILE Extruded aluminium profile with 4 holes for windows and under the frame of the ridge windows. L=5000 mm



CODE	DESCRIPTION
------	-------------

TRANSMISSION TUBE Ø 33,7x2,7 x6000 MM Transmission tube for roof openings

TRANSMISSION TUBE Ø 32x2x6000 MM Transmission tube for roof openings

CODE	DESCRIPTION
------	-------------



HALF SHELL Transmission junction Ø 32 mm (2 pieces are needed for each joint)

RIDGE OPENINGS



CODE	DESCRIPTION
ANTIDRIP BALLOON SEAL	Air and water anti-infiltration black rubber profile Application to the gutter



CODE	DESCRIPTION
ROD KIT	Tensioning system for anti-insect nets on ridge openings Rod Self-drilling screw + washer Bushing Outdoor hooks Fixing plaques



CODE	DESCRIPTION
GREASE PASTE FOR OPENINGS 1 kg JAR	Lubricant grease for racks Maintenance system for ridge openings High temperature resistance

**GREASE SPRAY
FOR OPENINGS
400 ml CAN**



SIDE OPENINGS



CODE	DESCRIPTION
THREE-PHASE LATERAL MOTOR	Power consumption 0,25 kW Voltage 400V – 0,9A Application for perimeter openings



CODE	DESCRIPTION
SINGLE-PHASE LATERAL MOTOR	Power consumption 0,25 kW Voltage 230V – 1,7A Application for perimeter openings



CODE	DESCRIPTION
SHORT CARDAN JOINT L=2500 H max 280	Application to the lateral motor-reducer or to the manual reducer NOT INCLUDED: junction system to be chosen based on winding tube

LONG CARDAN JOINT L=3500 H max 380	Application to the lateral motor-reducer or to the manual reducer NOT INCLUDED: junction system to be chosen based on winding tube
---	---



CARDAN JOINT Ø 20/25	Joint and handling accessory for both ends of the telescopic arm of the side openings
---------------------------------	---

SIDE OPENINGS



CODE

DIRECT MANUAL REDUCER 1:8

Manual application to the winding tube of gable for the Easyart and Tunnelart



CODE

MANUAL SIDE REDUCER 1:8

Manual application to the telescopic arm connected to the winding tube of the side opening. Suitable for openings up to 70 mt. long..



CODE

NEW MANUAL REDUCER 1:8

Manual application directly to the winding tube of the side opening. Equipped with posterior slide and crank handle. Suitable for openings up to 50 mt long..



CODE

DESCRIPTION

TUBE JUNCTION KIT Ø28

Junction kit between the cardan joint and the winding system on galvanized Ø 28 mm tube



CODE

DESCRIPTION

TUBE JUNCTION KIT Ø50 ALU

Junction kit between the cardan joint and the winding system on ALU Ø 50 mm tube



CODE

DESCRIPTION

SIMPLE CRANK HANDLE

Direct tilting crank handle. Suitable for openings up to 20/30 m long.

SIDE OPENINGS



CODE	DESCRIPTION
------	-------------

POSTERIOR SLIDE



CODE	DESCRIPTION
------	-------------

MANUAL WHEEL WINDER

Direct manual winder for ridge covering/uncovering openings



CODE	DESCRIPTION
------	-------------

SIDE MOTOR WITH SLIDE AND COUNTERWEIGHT

Power consumption 0,25 kW
Voltage 400V – 0,9A
Application to perimetral openings
Tube sliding Ø32 mm
Direct attachment to winding tube



CODE	DESCRIPTION
------	-------------

END-OF-STROKE SAFETY SYSTEM FOR EUROPROGRESS MOTORS

End-of-stroke safety system for ridge and lateral Europrogress motors



CODE	DESCRIPTION
------	-------------

END-OF-STROKE UNIVERSAL SYSTEM FOR RIDGE MOTORS

End-of-stroke safety system suitable for any type of rack

SIDE OPENINGS



CODE	DESCRIPTION
FRM50-12-230 MOTOR	Tubular motor for the internal rollbar Power consumption 0,205 kW Voltage 230V – 0,89A
FRM60-8-230 MOTOR	Tubular motor for the internal rollbar, Power consumption 0,205 kW. Voltage 230V-0.89A
FRM120-12-230 MOTOR	Tubular motor for the internal rollbar Power consumption 0,350 kW Voltage 230V – 0,56A
RB50 INTERNAL MOTOR	Tubular motor for the internal rollbar Power consumption 0,126 kW Voltage 230V – 0,56A
EXTERNAL MOTOR RB50E+	Tubular motor for the external rollbar Power consumption 0,126 Voltage 230V – 0,56A
INTERNAL MOTOR RB120	Tubular motor for the internal rollbar Power consumption 0,437 kW Voltage 230 – 1,9 A
RB120E+ EXTERNAL MOTOR	Tubular motor for the external rollbar Power consumption 0,437 kW Voltage 230V – 1,9A
GUIDE KIT	Ball bearing, motor bracket, starting clip A10, ending clip B10, cable-protector chain and end-of-stroke regulator
LIMIT SWITCH REGULATOR	Required for the RBE+ models
TUBULAR PROFILE GUIDE	Sliding guide for tubular motor

CODE	DESCRIPTION
------	-------------



MANDRIN FOR Ø50 ALU TUBE	Mandrin for anchoring the Ø50 tubular motor and the ALU Ø50 mm tube
---------------------------------	---

SIDE OPENINGS



L-shaped sheet to be placed in double profile at the end of the roll-bar openings.
N. 2 for each end.

CODE

ROLLBAR CONTAINMENT SHEET 60x250x4000

ROLLBAR CONTAINMENT SHEET 60x400x4000

ROLLBAR CONTAINMENT SHEET 100x400x4000



CODE

DESCRIPTION

**CARDAN
BEARING
Ø20/20**

Bearing and handling accessory of the cardan joint for both side openings of the telescopic arm



CODE

DESCRIPTION

**SIMPLE CARDAN
BEARING, 1", NO
ADAPTERS**

Accessory for the articulation and handling of both ends of the telescopic arm side openings

SIDE OPENINGS CONTAINMENT



CODE

TIE-ROD Ø27x2700

TIE-ROD Ø27x3200

TIE-ROD Ø32x2700

TIE-ROD Ø32x3200

TIE-ROD Ø32x3700

SIDE OPENINGS CONTAINMENT



CODE	DESCRIPTION
------	-------------

GUIDE BRACKET LONG / SHORT type Fixing bracket to the bearing pole of the containment tie-rod
Lateral containment rod version of Ø27 or 32 mm

L-SHAPED BRACKET FOR EYELET

EYELET Lateral containment rod version of Ø27 o 32 mm

SPACER Ø22x1,5x35 ZF



Lateral and frontal openings containment element

CODE

CROSSBAR 60x30x3700

CROSSBAR 60x30x4200

CROSSBAR 60x30x4700

CROSSBAR 60x30x5200



CODE	DESCRIPTION
------	-------------

CROSSBAR BRACKET Fixing bracket to the bearing pole of the containment crossbar

SIDE OPENINGS

SIDE OPENINGS CONTAINMENT



CODE	DESCRIPTION
------	-------------

CORD Ø6 MM Containment system for openings



CODE	DESCRIPTION
------	-------------

UNIFIX HOOK Cord fixing hook for opening containment



CODE	DESCRIPTION
------	-------------

WHITE NET 2X4 Opening ends protection net

WHITE NET 2X6 Opening ends protection net

LOW STRIP



CODE	DESCRIPTION
------	-------------

**LOW STRIP
6mm** Crops protection system for side and top openings
Length 5,00 or 6,00 mt
H=50 cm H=70 cm H=105 cm
To be paired with H profile

LOW STRIP



Crops protection system - Strip for side and gable openings.
Custom-made length rolls available

CODE

POLYESTER H=50 cm

POLYESTER H=75 cm

POLYESTER H=100 cm



Ω clip in white PVC for film and net fastening on the tubular

CODE

PVC CLIP Ø25

PVC CLIP Ø32

PVC CLIP Ø60



Ω clip in white PVC for film and net fastening on the tubular

CODE

STEEL CLIP Ø25

STEEL CLIP Ø30

STEEL CLIP Ø35

STEEL CLIP Ø55

STANDARD CONTROL BOARDS IN TECHNO-POLYMER



Switchboard for the control of the ridge and lateral motors, separately or simultaneously managed, They are provided with a digital control unit and temperature sensor. External housing in techno-polymer. IP 56 protection

CODE

AUT. CONTROL BOARD 1 MOTOR Q01MAEC+XSP-I

AUT. CONTROL BOARD 2 MOTORS Q02MAEC+XSP-I

AUT. CONTROL BOARD 3 MOTORS Q03MAEC+XSP-I

AUT. CONTROL BOARD 4 MOTORS Q04MAEC+XSP-I



Switchboard for the only manual control of the ridge and lateral motors but designed to automatically receive the command or by other boards or separated control units and computers. External housing in techno-polymer. IP 56 protection.

CODE

MAN. CONTROL BOARD 1 MOTOR Q01MMECS

MAN. CONTROL BOARD 2 MOTORS Q02MMECS

MAN. CONTROL BOARD 3 MOTORS Q03MMECS

MAN. CONTROL BOARD 4 MOTORS Q04MMECS

STANDARD CONTROL BOARDS IN FIBRE GLASS



Switchboard for the control of the ridge and lateral motors, separately or simultaneously managed. They are provided with a digital control unit and temperature sensor. External housing in fibre glass with glass frontal door. IP 65 protection.

CODE

Q. AUT. VTR 2 MOT. Q02MACVR+XSP-I

Q. AUT. VTR 3 MOT. Q03MACVR+XSP-I

Q. AUT. VTR 4 MOT. Q04MACVR+XSP-I

Q. AUT. VTR 5 MOT. Q05MACVR+XSP-I

Q. AUT. VTR 6 MOT. Q06MACVR+XSP-I

Q. AUT. VTR 7 MOT. Q07MACVR+XSP-I

Q. AUT. VTR 8 MOT. Q08MACVR+XSP-I

Q. AUT. VTR 9 MOT. Q09MACVR+XSP-I

Q. AUT. VTR 10 MOT. Q010MACVR+XSP-I

Q. AUT. VTR 11 MOT. Q011MACVR+XSP-I

Q. AUT. VTR 12 MOT. Q12MACVR+XSP-I

Q. AUT. VTR 13 MOT. Q13MACVR+XSP-I

Q. AUT. VTR 14 MOT. Q14MACVR+XSP-I

Q. AUT. VTR 15 MOT. Q15MACVR+XSP-I

Q. AUT. VTR 16 MOT. Q16MACVR+XSP-I

Q. AUT. VTR 17 MOT. Q17MACVR+XSP-I

Q. AUT. VTR 18 MOT. Q18MACVR+XSP-I

Q. AUT. VTR 19 MOT. Q19MACVR+XSP-I

Q. AUT. VTR 20 MOT. Q20MACVR+XSP-I

ADDITIONAL CONTROL UNITS TO STANDARD SWITCHBOARDS



CODE	DESCRIPTION
WIND AND RAIN SENSORS ADDITION XSP-WP-I	Control unit with wind and rain sensors, to be added to the standard switchboard
ADDITION OF WIND, RAIN SENSORS AND HEATING OUTPUT XSP-WPR-I	Control unit with wind and rain sensors, and heating output
ADDITION OF WIND, RAIN SENSORS AND INFLATION OUTPUT XSP-WPG-I	Control unit with wind and rain sensors and inflation output, to be added to the standard switchboard
HEATING ADDITION ON-OFF XSP-R-I	Control unit with ON-OFF heating output To be added to the standard switchboard
INFLATION ADDITION XSP-G-I	Control unit with inflation output To be added to the standard switchboard
OUTDOOR WIND AND RAIN PREDISPOSITION PREDISP-WP	XSP control unit designed to receive wind and rain signals by another control unit
XSP CONTROL UNIT WITH PROPORTIONAL COMMANDS FOR ALL VERSIONS	Door control with proportional system suitable for switchboards having the run up time motors nearly equivalent (no ridges+ laterals) Remove the suffix from the codes of the control units and switchboards

PROBES



CODE	DESCRIPTION
WIND PROBE - S-W	Wind transducer
RAIN PROBE S-P	Rain transducer
BRIGHTNESS PROBE S-LUX	Brightness transducer
RELATIVE HUMIDITY PROBE S-RH	Relative humidity transducer
SOLAR RADIATION PROBE S-RAD	Solar radiation transducer
SENSOR COVERING CAP	Sensor protection covering

THERMOSTAT AND HUMIDISTAT



CODE	DESCRIPTION
TERMOSTAT X-TH	Thermostat with remote probe
CODE	DESCRIPTION
HUMIDISTAT X-RH	Humidistat with remote probe
CYCLIC HUMIDISTAT X-RH-CY	Humidistat with cyclic operation suitable for humidification systems

ELECTRICAL SWITCHBOARDS

CONTROL UNITS FOR OPENINGS IN SERIES

Switchboard for the control of opening motors with the system of distributed switchboards. A switchboard is used in correspondence to each motor and a centralized control board with control unit or computer.

System suitable for great surface greenhouses.

The single switchboards cannot work automatically without the centralized.

External housing in resin with clear IP 65 protection frontal door



CODE

STANDARD CONTROL BOARD Q01MMS-24



CODE

CENTRALIZED CONTROL BOARD UP TO 10 MOTORS - Q-XXXXX

ELECTRICAL SWITCHBOARDS. FRENCH AUTOMATION SYSTEMS

SWITCHBOARD ON/OFF CONTROL REGULATOR

CODE

DESCRIPTION



POLYCLIM REGULATOR 2100 + TEMPERATURE PROBE CLI5095

Centralized control unit for on/off switchboards
1 opening step for n° 12 C1MA switchboards max.
Internal temperature probe included
Possibility of inserting wind speed and rain sensors

CODE

DESCRIPTION



POLYCLIM REGULATOR 2000 + TEMPERATURE PROBE CLI5097

Centralized control unit for on/off switchboards
2 opening steps for n° 12 C1MA switchboards max.
Internal temperature probe included
Possibility of inserting wind speed, 2D wind direction and rain sensors

SWITCHBOARD REGULATOR



CODE	DESCRIPTION
POLYCLIM REGULATOR 2200 + TEMPERATURE PROBE CLI5098	Centralized control unit for on/off switchboards 3 opening steps for n° 12 C1MA switchboards max. Internal temperature probe included Possibility of inserting wind speed, 2D wind direction and rain sensors



CODE	DESCRIPTION
POLYCLIM REGULATOR NG 10 CLI7010	Centralized control unit for on/off switchboards, probes and sensors Regulator for n° 12 C1MA switchboards max. Possibility to insert all the available sensors
CLI7010 NG10	1 section of openings
CLI7020 NG20	2 sections of openings
CLI7030 NG30	3 sections of openings
CLI7040 NG40	4 sections of openings
CLI7050 NG50	5 sections of openings

CONTROL SWITCHBOARDS



CODE	DESCRIPTION
C1MA POWER PANEL FOR 1 MOTOR PUI0001	Part of opening power motors or thermal screen



CODE	DESCRIPTION
C1MG 1 POWER INFLATION TURBINE PANEL PUI0002	Part of three-phase inflation turbine power

CONTROL SWITCHBOARDS



CODE	DESCRIPTION
------	-------------

**C1MC1 INTERFACE
PANEL PUI0003
HOT AIR
GENERATOR**

Part of three-phase inflation turbine power

CODE	DESCRIPTION
------	-------------

**PROTECTION BOX
FOR 1-10 MOTORS
PUI0450**

Box for thermal motor protection

**PROTECTION
BOX FOR 11-20
MOTORS PUI0450**

Box for thermal motor protection

INTERNAL SENSORS



CODE **DESCRIPTION**

**INTERNAL
TEMPERATURE
SENSOR
CA0001**



**GROUND
TEMPERATURE
SENSOR
CA0002**



**WATER
TEMPERATURE
SENSOR
CA0003**

Sensors for information gathering and transmission of the data to the switchboard that controls the openings



**HUMIDITY
SENSOR
CA0004**



**CO2 SENSOR
CA0040**

WEATHER SENSORS



CODE **DESCRIPTION**

**WIND SPEED
DETECTOR
CA0021**



**2D WIND
DIRECTION
DETECTOR
CA0022**

Sensors for information gathering and transmission of the data to the switchboard that controls the openings



**RAIN DETECTOR
CA0030**



STRUCTURAL PARTS

FOUNDATIONS



Foundations pillars for Ø60 mm pier. Hot-dip zinc plating.

CODE

Ø54x2x1200mm

Ø54x2x1500mm

Ø54x2x2000mm



Foundation pillars for 80x50 mm pier. Sendzimir Z 275 zinc plating

CODE

70x40x2x1200mm

70x40x2x1500mm

70x40x2x2000mm



Foundation pillars for 80x80 mm pier. Sendzimir Z 275 zinc plating

CODE

70x70x2x1200mm

70x70x2x1500mm

70x70x2x2000mm



CODE

DESCRIPTION

CATRAMINA

Foundation pillars coating
5 Lt canister

0,75l canister

FOOT WITH MOUNTING PLATE



Foot with mountain plate for anchoring on stringcourse or curb. Plate 200x200x3 mm. N. 4 holes. Central or offset plate. Hot-dip zinc plating.

CODE

Ø54x2x750mm + PLATE

70x40x2x750mm + PLATE

70x70x2x750mm + PLATE

Foot with mountain plate - Plate 200x200x3mm - N.4 holes. Central or offset plate. Cold zinc plating.

CODE

Ø54x2x1500mm + PLATE

70x40x2x1500mm + PLATE

70x70x2x750mm + PLATE



CODE

DESCRIPTION

MECHANIC AL DOWEL

Mechanical dowel 10x90x20 mm
Tubular fastening system by plate on concrete foundation or stringcourse



CODE

DESCRIPTION

CHEMICAL ANCHOR 300 ml

WIT-PM 250
Chemical anchor for tiles and threaded rods

MIXER CHEMICAL ANCHOR

HELICAL FOOT



Base with welded / bolted helix – Usable to avoid foundation cementation
For pole 80x80 mm / 80x50 mm / Ø60 mm. Hot-dip zinc plating.

CODE

Ø54x2x1350mm + HELIX

70x40x2x1350mm + HELIX

70x70x2x1350mm + HELIX

TUNNEL ANCHORS



CODE

DESCRIPTION

TUNNEL ANCHOR

Tunnel anchoring with vineyard-like system
L=600 mm



CODE

ANCHOR KEY



CODE

DESCRIPTION

ZINC-COATED SCREW ANCHOR

Tunnel anchoring with vineyard-like system
L=800 mm

STRUCTURAL PARTS

TUNNEL ANCHORS



CODE	DESCRIPTION
FENOX ANCHOR L=600	Zinc-coated anchor with 3 anchoring arms.
CODE	DESCRIPTION
STICKING TOOL	Tool to stick the anchor into the ground.
MANDRIN	Accessory for arm anchoring in the ground.

BEARING PILLARS



Greenhouse bearing pillars- Sendzimir Z 275 zinc plating

CODE
PILLAR Ø60x1,5x2750mm
PILLAR Ø60x1,5x3250mm
PILLAR Ø60x1,5x3750mm

Greenhouse bearing pillars- Sendzimir Z 275 zinc plating

CODE
PALO Ø60x2x2750mm
PALO Ø60x2x3250mm
PALO Ø60x2x3750mm



CODE	DESCRIPTION
LATERAL PILLAR JUNCTION Ø60	Connection junction of the arch pillar for greenhouses without lateral gutter

BEARING PILLARS

Lateral bearing pillar for greenhouse without lateral gutters – Lateral widening 35 cm
Sendzimir Z 275 zinc plating

CODE

PILLAR Ø60x1,5x3500mm LP (H=3,00)

PILLAR Ø60x1,5x4000mm LP (H=3,50)



Greenhouse bearing pillars - Sendzimir Z 275 zinc plating

CODE

PILLAR 80x50x2x3250mm

PILLAR 80x50x2x3750mm

PILLAR 80x50x2x4250mm

PILLAR 80x50x2x4750mm



Greenhouse bearing pillar - Sendzimir Z 275 zinc plating

CODE

PILLAR 80x80x2x3250mm

PILLAR 80x80x2x3750mm

PILLAR 80x80x2x4250mm

PILLAR 80x80x2x4750mm

PILLAR 80x80x3x3250mm

PILLAR 80x80x3x3750mm

PILLAR 80x80x3x4250mm

PILLAR 80x80x3x4750mm

CODE

DESCRIPTION

**HOT-DIP ZINC
PLATING**

Hot-dip zinc plating for tubes by the kg





STRUCTURAL PARTS

MULTIART ARCHES



CODE	DESCRIPTION
SEMI-ARCH Ø76x1,5x3310 mm	Arch for Multiart 6400
SEMI-ARCH Ø76x1,5x4250 mm	Arch for Multiart 8000
SEMI-ARCH Ø76x1,5x4790 mm	Arch for Multiart 9000
SEMI-ARCH Ø76x1,5x5150 mm	Arch for Multiart 9600
SEMI-ARCH Ø76x1,5x5350 mm	Arch for Multiart 10000
SEMI-ARCH Ø76x1,5x5650 mm	Arch for Multiart 10600
SEMI-ARCH Ø76x1,5x6400 mm	Arch for Multiart 12000
SEMI-ARCH Ø76x1,5x6900 mm	Arch for Multiart 12800
RIDGE JUNCTION Ø76x1,5x600 mm	Multiart semi-arch junction Ø76mm

MULTIART ARCHES



CODE	DESCRIPTION
SEMI-ARCH Ø60x1,5x3210 mm	Arch for Multiart 6400
SEMI-ARCH Ø60x1,5x4060 mm	Arch for Multiart 8000
SEMI-ARCH Ø60x1,5x4600 mm	Arch for Multiart 9000
SEMI-ARCH Ø60x1,5x4900 mm	Arch for Multiart 9600
SEMI-ARCH Ø60x1,5x6250 mm	Arch for Multiart 12000
RIDGE JUNCTION Ø60x1,5x600 mm	Multiart semi-arch junction Ø60mm
END CROSS Ø54/27	Multiart semi-arch junction



Arch reinforcement tie-rod

CODE
TIE-ROD Ø27x1,5mm
TIE-ROD Ø32x1,5mm
TIE-ROD Ø32x2mm
TIE-ROD Ø42x1,5mm
TIE-ROD Ø42x2mm

ARCHES FOR OGIVA TUNNELS



CODE	DESCRIPTION
SEMI-ARCH Ø60x1,5x4700 mm	Arch for OGIVA 6000 tunnel
SMALL ARCH Ø60x1,5x400 mm	Small arch for OGIVA 6000 tunnel
LOWER SEMI-ARCH Ø60x1,5x3100 mm	Arch for NordiArt 8000 tunnel
UPPER SEMI-ARCH Ø60x1,5x3000 mm	Arch for NordiArt Ogiva 8000 tunnel
RIDGE JUNCTION Ø60x1,5x400 mm	NordiArt 8000 arch junction
LOWER SEMI-ARCH Ø60x1,5x3380 mm	Arch for OGIVA 9600 tunnel
UPPER SEMI-ARCH Ø60x1,5x3600 mm	Arch for OGIVA 9600 tunnel
SMALL ARCH Ø60x1,5x400 mm	Arch junction for OGIVA 9600 tunnel

ARCHES FOR SIMPLE TUNNELS



CODE	DESCRIPTION
SEMI-ARCH Ø60x1,5x6000 mm	Arch for 8000 simple tunnel
LOWER SEMI-ARCH Ø60x1,5x340 0mm	Arch for 9300 simple tunnel
UPPER SEMI-ARCH Ø60x1,5x3300 mm	Arch for 9300 simple tunnel
JUNCTION Ø60x120 mm	Simple tunnel semi-arch junction
INTERMEDIATE CROSS Ø57x27 mm	

STRUCTURAL PARTS

SPACERS



CODE

WRAPPING CLAMP Ø32x1185

WRAPPING CLAMP Ø32x1685

WRAPPING CLAMP Ø32x2185

WRAPPING CLAMP Ø32x2685

WRAPPING CLAMP Ø32x3185

GUTTERS AND SUPPORTS

LATERAL GUTTER



Press-formed gutter for rainwater collection - Thickness 15/10 - Development 474 mm.
Sendzimir Z 275 zinc plating.

CODE

**LATERAL GUTTER
L=1998**

**LATERAL GUTTER
L=2498**

**LATERAL GUTTER
L=2998**

**LATERAL GUTTER
L=3998**

CENTRAL GUTTER

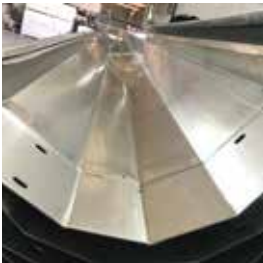
Press-formed gutter for rainwater collection - Thickness 15/10 - Development 550 mm - Z450 zinc plating

CODE

**CENTRAL GUTTER
L=3998**

**CENTRAL GUTTER
L=2998**

**CENTRAL GUTTER
L=2498**



Press-formed gutter for rainwater collection - Thickness 15/10 - Development 557 mm. Z450 zinc plating - Overlapping edge at the end - N. 4 bolts for each end

CODE

**FUNNEL SHAPED CENTRAL GUTTER
L=2145**

**FUNNEL SHAPED CENTRAL GUTTER
L=2645**

**FUNNEL SHAPED CENTRAL GUTTER
L=3145**

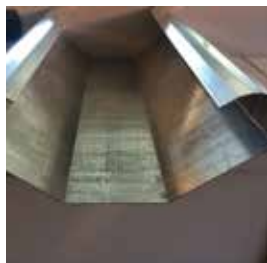
**FUNNEL SHAPED CENTRAL GUTTER
L=4145**

**FUNNEL SHAPED CENTRAL GUTTER
L=5145**

**FUNNEL SHAPED CENTRAL GUTTER
L=6145**

GUTTERS AND SUPPORTS

GUTTER FOR ROLLER RIDGE VENT



Press-formed gutter for rainwater collection - Thickness 12/10 - Sendzimir Z 275 zinc plating - Anchoring and fixing windable tube - Length= 3000-4000-5000-6000 mm

CODE

LATERAL GUTTER SV. 500

CENTRAL GUTTER SV. 625

SUPPORTS



Gutter support bracket for Ø76 mm arch:
- n. 1 for lateral pole
- n. 2 central pole
For the lateral add the relative gutter support

CODE

GUTTER BRACKET

LATERAL GUTTER SUPPORT

SPACER 15x15x75x1.5

PLASTIC CAP 80x80



CODE

DESCRIPTION

**LATERAL
GUTTER
SUPPORT
2018**

Lateral gutter support for lodging on the bearing pillars and Ø60 mm arch graft

GUTTERS AND SUPPORTS

SUPPORTS



CODE	DESCRIPTION
------	-------------

CENTRAL GUTTER SUPPORT 2018

Central gutter support for lodging on the bearing pillar and Ø60 mm arch graft

CODE	DESCRIPTION
------	-------------



POLE ADAPTOR Ø 60

Connecting bracket between the Ø60 pole and the gutter support

CODE	DESCRIPTION
------	-------------



LATERAL GUTTER SUPPORT JUNCTION 29018

Gutter support junction for installing the central gutter drainpipe on the lateral gutter support

GUTTER ENDS WITHOUT DRAINPIPE

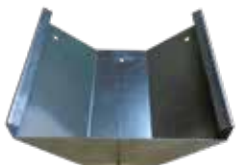
CODE	DESCRIPTION
------	-------------



LATERAL

Application to the left or right lateral drainpipe gutter, to be communicated when ordering

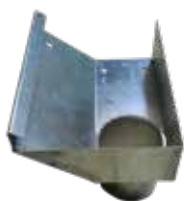
CODE	DESCRIPTION
------	-------------



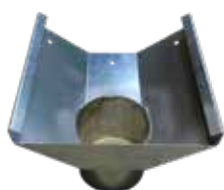
CENTRAL

Application to the central drainpipe gutter

GUTTER END WITH DRAINPIPE



CODE	DESCRIPTION
LATERAL	Application to the left or right lateral drainpipe gutter, to be communicated when ordering



CODE	DESCRIPTION
CENTRAL	Application to the central drainpipe gutter

GUTTER ENDS WITH DRAINPIPE

Rain drainpipe from the lateral gutter



CODE
PVC TUBE Ø125x3000
PVC TUBE Ø125x2000
PVC TUBE Ø160x3000
PVC TUBE Ø160x2000

GUTTER ENDS WITH DRAINPIPE

Intermediate gutter drainpipe placed in the central and lateral gutters with connection to rain drainage.



CODE

LATERAL GUTTER DRAINPIPE Ø 100

CENTRAL GUTTER DRAINPIPE Ø 160

IPE BEAMS FOR MULTISPACE BETWEEN PILLARS



Central gutter support beam for distance between the pillars - Hot-dip zinc plating.

CODE

IPE 160 L=4000

IPE 160 L=5000

IPE 160 L=6000

TRUSSED BEAMS FOR DOUBLE SPACING BETWEEN PILLARS



Central gutter support beam for distance between the pillars - Cold zinc plating - H=500-900 mm

CODE

TRUSSED BEAM L=5000

TRUSSED BEAM L=6000

TRUSSED BEAM L=7500

TRUSSED BEAM L=9000

GUTTERS AND SUPPORTS

ACCESSORIES



CODE	DESCRIPTION
------	-------------

BOLT 8x35 Gutter bolt
100/pcs. box



CODE	DESCRIPTION
------	-------------

STEEL WASHER 8x24 Steel washer for gutter
500 pcs. /box



CODE	DESCRIPTION
------	-------------

FLANGED BOLTS 8x30 Gutter bolt
50 pcs./box



CODE	DESCRIPTION
------	-------------

RUBBER WASHER Rubber washer for gutter
50 pcs./box



CODE	DESCRIPTION
------	-------------

FLANGED NUT M8 Gutter nut
500 pcs./box



CODE	DESCRIPTION
------	-------------

GREY SILICONE Gutter junction waterproofing silicone

TUBOLARS



CG Iron profile

TUBE 80x80x2x6000mm

**42 pcs. TUBE PACKAGE
80x80x2x6000mm**

TUBE 80x50x2x6000mm

**54 pcs. TUBE PACKAGE
80x50x2x6000mm**

TUBE 60x30x2x6000mm

**104 pcs. TUBE PACKAGE
60x30x1,5x6000mm**

CROSSBARS 60x30 MM



Iron profile cold zinc plating - Anchoring traverse for gable and lateral cladding

CODE

CROSSBAR 60x30x1,5x1895mm

CROSSBAR 60x30x1,5x2395mm

CROSSBAR 60x30x1,5x2895mm

CROSSBAR 60x30x1,5x3895mm

CROSSBAR 60x30x1,5x3095mm

CROSSBAR 60x30x1,5x2295mm

VARIOUS TUBES

TUBULAR 25X25 MM



Iron profile cold zinc plating - Anchoring traverse lateral cladding

CODE

TUBE 25x25x1,5x6000

196 pieces PACKAGE 25x25x1,5x6000mm

TUBULAR Ø27/32MM



Iron profile cold zinc plating -Winding profiles or lengthwise reinforcement

CODE

TUBE Ø27x1,5x6000

225 pieces PACKAGE Ø27x1,5x6000

TUBE Ø32x1,5x6000

169 pieces PACKAGE Ø32x1,5x6000

JUNCTIONS



CODE

DESCRIPTION

**INTERNAL
CONNECTION
20x20x200**

Iron galvanized piece for tubular junction
25x25mm

**JUNCTION
25x25x400**

Iron galvanized piece for aluminum Ø50mm
tubular junction

**IRON JUNCTION
Ø22x1,5x200**

Iron galvanized piece for tubular junction

VARIOUS TUBE

JUNCTIONS



CODE	DESCRIPTION
TAPERED Ø60 TUBE	Tube with tapering at the end for telescopic fixing L=1000mm

METAL SHEETS AND PROFILES

LOW STRIP PROFILE



Zinc-coated containment and windproof profile
Application for low strip in 6mm alveolar polycarbonate, also fretted or fiberglass

CODE

LOW STRIP NARROW PROFILE L=5000

LOW STRIP JUNCTION

WIDE STRIP PROFILE L=2500

WIDE STRIP PROFILE L=3000

WIDE STRIP PROFILE L=4000

WIDE STRIP JUNCTION

METAL SHEETS AND PROFILES

FINISHING METAL SHEETS



Positioning under the low strip or the cladding in semi-rigid material - Thickness 10/10
Avoids air draughts

CODE

L SHEET 50x30x2500

L SHEET 50x30x3000

L SHEET 50x30x4000



Zinc coated sheet with windproof finishing - Thickness 15/10

CODE

L SHEET 65x105x4000

L SHEET 65x105x5000

L SHEET 50x120x4000

L SHEET 50x120x5000



RIDGE SAWN SHEET

Finishing zinc coated sheet
Positioned at the ridge of the gables
Thickness 10/10

90x50x3500

70x40x3500

CODE

DESCRIPTION

ANTI-CONDENSATION METAL SHEETS

Anti-condensation galvanised profile placed under the hinge of the gutter openings or under the frame of the ridge windows - Thickness 10/10



CODE

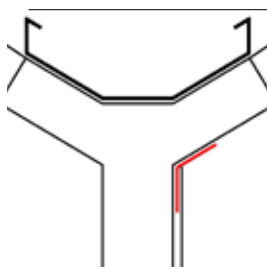
V PROFILE L=2500 mm

V PROFILE L=3000 mm

V PROFILE L=4000 mm

UNDER GUTTER SHEET

Sheets positioned under the central gutter drainpipe for the cladding of the internal partition - Thickness 10/10



CODE

UNDER GUTTER SHEET L=1995

UNDER GUTTER SHEET L=2495

UNDER GUTTER SHEET L=2995

UNDER GUTTER SHEET JUNCTION

METAL SHEETS AND PROFILES

FINISHING METAL SHEETS

Closing metal sheet for 40mm panel - Thickness 10/10 - Sv. 60+46+40 mm

CODE

LOWER U SHEET L=2500

LOWER U SHEET L=3000

LOWER U SHEET L=4000

VARIOUS METAL SHEETS



CODE

DESCRIPTION

**PERFORATED
OMEGA
PROFILE**

Profile for fastening polycarbonate on the cover in rigid material
L=3000mm

VARIOUS METAL SHEETS

CODE	DESCRIPTION
OMEGA PROFILE FOR GLASS L=3200 L=2500 L=3000 L=4000	Glass support profile Thickness 10/10 Sv. 50+50+50+50+50 mm

COLLARS AND BRACKETS



CODE	DESCRIPTION
EXTERNAL COLLAR Ø60 mm 25x25 (10070) Ø76 mm/25x25	Tube support collar 25x25 mm on Ø60 mm arch



CODE	DESCRIPTION
INTERNAL COLLAR Ø60 mm 25x25 (10464) Ø76 mm/25x25	Ø32 tube support collar on Ø60 mm arch



CODE	DESCRIPTION
EXTERNAL COLLAR Ø60 mm 32 (10484) Ø76 mm / Ø32 mm	Ø32 tube support collar on Ø60 mm arch



CODE	DESCRIPTION
CROSSBAR BRACKET 60x30mm (10118)	Crossbar fastening bracket on rectangular pillar



CODE	DESCRIPTION
CROSSBAR BRACKET 60x30 mm (10181)	Crossbar fastening bracket on round pillar

COLLARS AND BRACKETS



CODE	DESCRIPTION
CROSSBAR BRACKET 80x50 mm (10416)	Crossbar fastening bracket 80x50 mm on rectangular pillar



CODE	DESCRIPTION
TUBE FASTENING BRACKET 25x25 mm (10493)	Tube fastening collar 25x25 mm



CODE	DESCRIPTION
COLLAR Ø76 mm	Tie-rod fastening collar on Ø76 mm arch Sp. 2 mm



CODE	DESCRIPTION
COLLAR Ø60 mm (10020)	Tie-rod fastening collar on Ø60 mm arch



CODE	DESCRIPTION
COLLAR Ø42 mm	Tie-rod fastening collar on Ø42 mm tube Sp. 2 mm



CODE	DESCRIPTION
COLLAR Ø32 mm (10103)	Tie-rod fastening collar on Ø32 mm arch



CODE	DESCRIPTION
BRACKET Ø60 mm	Tie-rod fastening collar on Ø60 mm arch

COLLARS AND BRACKETS

Lateral wind bracing fastening collar on rectangular pole - Thickness 10/10



CODE

COLLAR 80x50 mm FOR SAINT ANDREW'S CROSSES

COLLAR 80x80mm FOR SAINT ANDREW'S CROSSES



CODE

DESCRIPTION

BRACKET

Tie-rod fastening bracket on Ø60 mm arch

For fastening gutters on bi-tunnel - H 93 mm - Thread 32 mm



CODE

**U BOLT
Ø76 ARCH**

**U BOLT
Ø60 ARCH**



CODE

DESCRIPTION

**LONG U BOLT
Ø60 ARCH**

For fastening tunnel wind bracing
H 128 mm
Thread 52 mm



CODE

DESCRIPTION

**ANCHORING
CLAMP Ø32
FOR SAINT
ANDREW'S
CROSSES**

Jumper Ø32mm + fastening plate + 2 nuts

SELF-DRILLING SCREWS

Fastening of aluminium and zinc-coated profiles - Fastening of cladding semi-rigid materials



CODE

SELF-DRILLING SCREW 4,8x19
(N. 500 PCS./BOX)

SELF-DRILLING SCREW 4,8x25
(N. 500 PCS./BOX)

SELF-DRILLING SCREW 4,8x32
(N. 500 PCS./BOX)

SELF-DRILLING SCREW 4,8x50
(N. 250 PCS./BOX)

Fastening of aluminium and zinc-coated profiles - Fastening of cladding semi-rigid materials



CODE

SELF-DRILLING SCREW 6,3x19
(N. 500 PCS./BOX)

SELF-DRILLING SCREW 6,3x25
(N. 500 PCS./BOX)

SELF-DRILLING SCREW 6,3x32
(N. 250 PCS./BOX)

SELF-DRILLING SCREW 6,3x45
(N. 250 PCS./BOX)

SELF-DRILLING SCREW 6,3x50
(N. 250 PCS./BOX)

SELF-DRILLING SCREW 6,3x100
(N. 100 PCS./BOX)

NUTS AND BOLTS

WASHERS



Special anti-infiltration rubber gasket

CODE

VULCA WASHER 4,8x16
(N. 500 PCS./BOX)

VULCA WASHER 6,3x19
(N. 500 PCS./BOX)

M8 BOLTS



Fastening bolt

CODE

BOLT 8x30
(N. 100 PCS./BOX)

BOLT 8x50
(N. 100 PCS./BOX)

BOLT 8x70
(N. 100 PCS./BOX)

BOLT 8x100
(N. 50 PCS./BOX)

NUTS AND BOLTS

M10 BOLTS



Fastening bolt

CODE

BOLT 10x50
(N. 100 PCS./BOX)

BOLT 10x70
(N. 100 PCS./BOX)

BOLT 10x90
(N. 25 PCS./BOX)

BOLT 10x100
(N. 25 PCS./BOX)

BOLT 10x120
(N. 50 PCS./BOX)

NUTS



Nut for bolt fastening

CODE

NUT M8
(N. 1000 PCS./BOX)

NUT M10
(N. 100 PCS./BOX)

VARIOUS ACCESSORIES



CODE	DESCRIPTION
IRON CABLE N. 16 Ø2,7 mm	Galvanized iron cable 550 mtl spool Used as bearing for the fibre glass rolls in the cover, as longitudinal reinforcement to the crop support and low strip support in the plastic film

IRON CABLE N. 22 Ø5,5 mm	Galvanized iron cable 350 mtl spool Used in lowering crops system
---	---



CODE	DESCRIPTION
AGROFIL CABLE Ø4 mm	3 filament steel coated cable 500 mtl spool Used in lowering crops system

CAVO AGROFIL Ø6 mm	7 filament steel coated cable 250 mtl spool Used in lowering crops system
-------------------------------	---

CODE	DESCRIPTION
------	-------------



TENSIONER	Iron wire stretcher
------------------	---------------------

CODE	DESCRIPTION
------	-------------



COATED CORD 6mm	Coated metal cable for fastening cover films of EasyArt greenhouses 130 mtl spool
----------------------------	--

CODE	DESCRIPTION
------	-------------



STEEL HOOK 2 FPR	Hook for fixing the covering cord
-----------------------------	-----------------------------------

VARIOUS ACCESSORIES



CODE	DESCRIPTION
LIGATURES L=300mm	Galvanized binds Ø1,1mm for anchoring the iron wire to the arch. 1'000 pieces per hank



CODE	DESCRIPTION
LIGATURE HANDLE	Ligature coiling crank handle for arch fastening



CODE	DESCRIPTION
GENOESE CHAIN N. 24 – Ø6,5mm	Suspension chain for hanging thermos-generators

SMALL GENOESE CHAIN N. 16 – Ø2,7mm	Suspension chain
---	------------------



CODE	DESCRIPTION
STEEL WIRE 19 threads 3mm	Metal cable for fastening the fretted polycarbonate in cover

Wire wrapping accessory



CODE
REDANCE CABLE 4 mm
REDANCE CABLE 6 mm

VARIOUS ACCESSORIES

Cable fastening metal clip



CODE

CABLE CLIP 3-4 mm

CABLE CLIP FOR AGROFIL 6 mm

CABLE CLIP FOR GALVA CABLE N.22 / Ø5,5 mm

Threaded eyelet



CODE

EYELET SCREW 8x52

EYELET SCREW 10x60

EYELET SCREW 10x97

CODE



THREADED ROD M8x1000

THREADED ROD M10x1000



DOORS

DOORS

ZINC-COATED DOORS

DOORS 2,00 MT



Zinc-coated iron structure - 1 sliding door - Guide, doorstop, carts, handles.
Cladding not included

CODE

DOOR 2,00x2,50

DOOR 2,00x3,00

DOOR 2,00x3,50

DOOR 2,00x4,00

DOORS 2,50 MT



Zinc-coated iron structure - 1 sliding door - Guide, doorstop, carts, handles.
Cladding not included.

CODE

DOOR 2,50x2,50

DOOR 2,50x3,00

DOOR 2,50x3,50

DOOR 2,50x4,00

ZINC-COATED DOORS

DOORS 3,00 MT



Zinc-coated iron structure - 1 sliding door - Guide, doorstop, carts, handles.
Cladding not included.

CODE

DOOR 3,00x2,50

DOOR 3,00x3,00

DOOR 3,00x3,50

DOOR 3,00x4,00

DOORS 3,20 MT



Zinc-coated iron structure - 1 or 2 sliding door - Guide, doorstop, carts, handles.
Cladding not included

CODE

DOOR 3,20x2,50

DOOR 3,20x3,00

DOOR 3,20x3,50

DOOR 3,20x4,00

ZINC-COATED DOORS

DOORS 4,00 MT



Zinc-coated iron structure - 1 or 2 sliding door - Guide, doorstop, carts, handles.
Cladding not included.

CODE

DOOR 4,00x2,50

DOOR 4,00x3,00

DOOR 4,00x3,50

DOOR 4,00x4,00

DOORS 5,00 MT



Zinc-coated iron structure - 1 sliding door - Guide, doorstop, carts, handles.
Cladding not included.

CODE

DOOR 5,00x2,50

DOOR 5,00x3,00

DOOR 5,00x3,50

DOOR 5,00x4,00

ZINC-COATED DOORS

DOORS 6,00 MT



Zinc-coated iron structure - 2 sliding door - Guide, doorstop, carts, handles.
Cladding not included

CODE

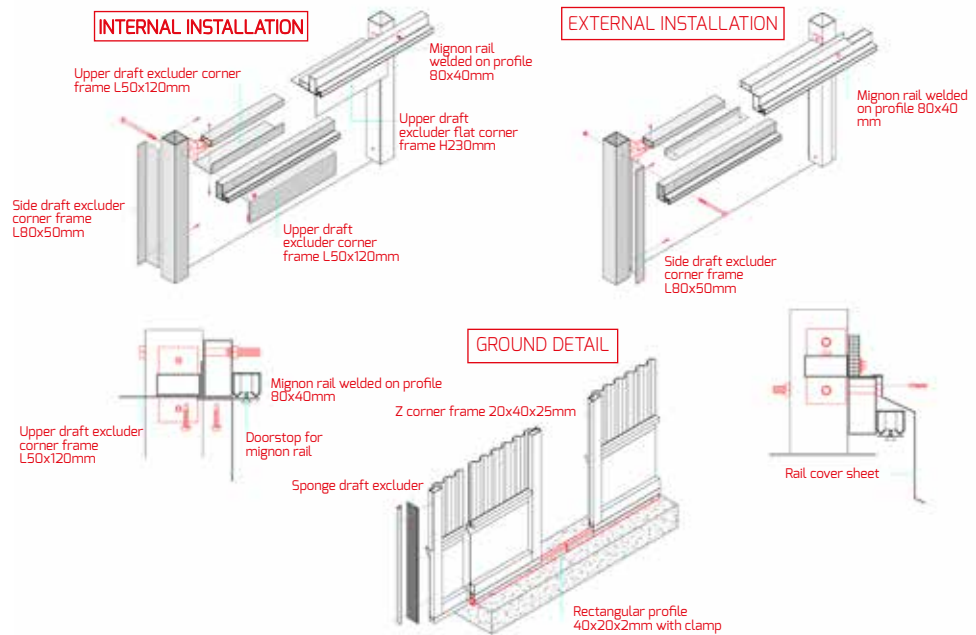
DOOR 6,00x2,50

DOOR 6,00x3,00

DOOR 6,00x3,50

DOOR 6,00x4,00

ACCESSORIES



CODE	DESCRIPTION
------	-------------

HIGHER RUNNER Upper runner welded on 80x40mm profile for sliding door

CODE	DESCRIPTION
------	-------------

4 WHEEL CARRIAGE Upper sliding wheels

CODE	DESCRIPTION
------	-------------

ANTI-AIR DRAUGHT SUPERIOR FRAME L50x120MM Anti-air draught profile for indoor installation

CODE	DESCRIPTION
------	-------------

ANTI-AIR DRAUGHT SUPERIOR FRAME L50x55MM Anti-air draught profile for indoor installation

CODE	DESCRIPTION
------	-------------

FLAT SUPERIOR FRAME 230mm Anti-air draught profile for indoor installation

CODE	DESCRIPTION
------	-------------

ANTI-AIR DRAUGHT LATERAL FRAME L80x50mm Anti-air draught profile for indoor installation

ACCESSORIES

CODE	DESCRIPTION
------	-------------

**Z SHAPED FRAME
20x40x25mm** Anti-air draught profile ridge for indoor/outdoor installation

CODE	DESCRIPTION
------	-------------

**EXTERNAL GUIDE
COVERING SHEET** Anti-air draught profile for outdoor installation

CODE	DESCRIPTION
------	-------------



**ANTI-AIR DRAUGHT
RUBBER
100x1,5mm** Anti-air draught seal for sliding doors

CODE	DESCRIPTION
------	-------------

**ANGLE FRAME FOR
RUBBER FIXING** Rubber fixing profile

CODE	DESCRIPTION
------	-------------



PLASTIC HANDLE Opening fixed handle

CODE	DESCRIPTION
------	-------------



**END-OF-STROKE
BLOCK FOR SLIDING
DOOR** Opening block
Positioning on upper runner end

CODE	DESCRIPTION
------	-------------

**C PROFILE
30x30x2mm** Floor guide for sliding door

CODE	DESCRIPTION
------	-------------

**RECTANGULAR
PROFILE 40x20mm
WITH CLAMPS** Floor guide for sliding door

ZINC-COATED DOORS

ACCESSORIES



CODE

DESCRIPTION

LATERAL RUNNER

Lower runners block with sliding rolls
Positioned along the lateral pillar



CODE

DESCRIPTION

CENTRAL RUNNER

Closing alignment central block
Positioned at the centre of the door

ALUMINIUM DOORS – 1 SLIDING PANEL

IN ALVEOLAR POLYCARBONATE 10MM



Structure in anodized aluminium - 1 sliding door – Opening handle and guides not included

CODE

DOOR 2,00x3,00

DOOR 2,00x3,50

DOOR 2,00x4,00

CODE

DOOR 2,50x3,00

DOOR 2,50x3,50

DOOR 2,50x4,00

CODE

DOOR 3,00x3,00

DOOR 3,00x3,50

DOOR 3,00x4,00

ALUMINIUM DOORS – 1 SLIDING PANEL

IN GLASS 3+3MM / SANDWICH PANEL 30MM

Structure in anodized aluminium - 1 sliding door – Opening handle and guides not included

CODE

DOOR 2,00x3,00

DOOR 2,00x3,50

DOOR 2,00x4,00

CODE

DOOR 2,50x3,00

DOOR 2,50x3,50

DOOR 2,50x4,00

CODE

DOOR 3,00x3,00

DOOR 3,00x3,50

DOOR 3,00x4,00

ALUMINIUM DOORS – 2 SLIDING PANELS

IN ALVEOLAR POLYCARBONATE 10MM

Structure in anodized aluminium - 2 sliding doors – Opening handle and guides not included

CODE

DOOR 3,20x3,00

DOOR 3,20x3,50

DOOR 3,20x4,00

CODE

DOOR 4,00x3,00

DOOR 4,00x3,50

DOOR 4,00x4,00

CODE

DOOR 5,00x3,00

DOOR 5,00x3,50

DOOR 5,00x4,00



ALUMINIUM DOORS – 2 SLIDING PANELS

IN GLASS 3+3MM / SANDWICH PANEL 30MM

Structure in anodized aluminium - 2 sliding doors – Opening handle and guides non included

CODE

DOOR 3,20x3,00

DOOR 3,20x3,50

DOOR 3,20x4,00

CODE

DOOR 4,00x3,00

DOOR 4,00x3,50

DOOR 4,00x4,00

CODE

DOOR 5,00x3,00

DOOR 5,00x3,50

DOOR 5,00x4,00



ALUMINIUM DOORS

ALUMINIUM SWING DOORS



Structure in anodized aluminium

CODE

DOOR 1,20x2,20 POLYCARBONATE 10 mm

DOOR 1,20x2,20 GLASS 3+3 mm

DOOR 1,20x2,20 SANDWICH PANEL 30 mm



Structure in anodized aluminium

CODE

DOOR 1,20+0,80x2,20 POLYCARBONATE 10 mm

DOOR 1,20+0,80x2,20 GLASS 3+3 mm

DOOR 1,20+0,80x2,20 SANDWICH PANEL 30 mm

SLIDING DOORS ACCESSORIES



CODE

DESCRIPTION

UPPER GUIDE

Upper door guide in aluminium



CODE

DESCRIPTION

LOWER GUIDE

Lower door guide in aluminium

SLIDING DOORS ACCESSORIES



CODE	DESCRIPTION
PANIC EXIT DEVICE	Push-bar for safety opening



CODE	DESCRIPTION
RETURN SPRING	Door spring closing system

ALUMINIUM DOORS

HOPPER WINDOWS



Aluminium and glass window opening from the top

CODE
HOPPER WINDOW 1,20x1,50 MT
HOPPER WINDOW 1,20x1,50 MT

ALUMINIUM DOORS

AUTOMATIC DOORS



Structure in anodized aluminium - Glass 55.1 - 2 automatic sliding doors - Anti-noise sliding track - Emergency batteries 20-30 min. - 2 infrared sensors - Electric blocking + manual unblocking - Voltage 230V - Absorption 200W - 1 key selector

CODE

DOOR 1,20x2,50 mt

DOOR 1,60x2,50 mt

DOOR 2,00x2,50 mt

ROLLER DOORS

ROLL-UP "AV600"



Self-bearing structure in 15/10 white pre-painted sheet RAL 9002.

Lateral seals in PVC for the cover to slide.

PVC tear-resistant cover 900 gr/m²

Winder shaft Ø120 mm.

Tri-phase motorization 0,37-0,75-1,5 KW - 400V-50Hz. Equipped with electro-brake.

Control board with 400V power supply and low voltage 24V auxiliaries, IP55 protection. Pre-wired electric system.

Wind resistance: 45 kg/m² (class 2) (resistance guaranteed when door closed).

Opening speed up to 0.7 m/s.

BASIC EQUIPMENT

N. 1 digital end-of-movement switch

N. 1 Pair of photocells IP67

N. 1 warning light IP65

N. 1 external button IP65

N. 1 clear strip at man height

SPACE UTILE	POSA IN LUCE	POSA OLTRE LUCE
SPACE 3,00x3,00	DOOR 2,67x2,50	DOOR 3,00x3,00
SPACE 3,00x3,50	DOOR 2,66x2,90	DOOR 3,00x3,50
SPACE 3,00x4,00	DOOR 2,66x3,40	DOOR 3,00x4,00
SPACE 3,00x4,50	DOOR 2,66x3,90	DOOR 3,00x4,50
SPACE 3,00x5,00	DOOR 2,66x4,40	DOOR 3,00x5,00

ROLLER DOORS

RULL-UP "AV600"

USEFUL SPACE	IN SPAN	OUT OF SPAN
SPACE 3,20x3,00	DOOR 2,87x2,50	DOOR 3,20x3,00
SPACE 3,20x3,50	DOOR 2,86x2,90	DOOR 3,20x3,50
SPACE 3,20x4,00	DOOR 2,86x3,40	DOOR 3,20x4,00
SPACE 3,20x4,50	DOOR 2,86x3,90	DOOR 3,20x4,50
SPACE 3,20x5,00	DOOR 2,86x4,40	DOOR 3,20x5,00
USEFUL SPACE	IN SPAN	OUT OF SPAN
SPACE 4,00x3,00	DOOR 3,66x2,40	DOOR 4,00x3,00
SPACE 4,00x3,50	DOOR 3,66x2,90	DOOR 4,00x3,50
SPACE 4,00x4,00	DOOR 3,66x3,40	DOOR 4,00x4,00
SPACE 4,00x4,50	DOOR 3,66x3,90	DOOR 4,00x4,50
SPACE 4,00x5,00	DOOR 3,66x4,40	DOOR 4,00x5,00
USEFUL SPACE	IN SPAN	OUT OF SPAN
SPACE 5,00x3,00	DOOR 4,66x2,40	DOOR 5,00x3,00
SPACE 5,00x3,50	DOOR 4,66x2,90	DOOR 5,00x3,50
SPACE 5,00x4,00	DOOR 4,66x3,40	DOOR 5,00x4,00
SPACE 5,00x4,50	DOOR 4,66x3,90	DOOR 5,00x4,50
SPACE 5,00x5,00	DOOR 4,66x4,40	DOOR 5,00x5,00
USEFUL SPACE	IN SPAN	OUT OF SPAN
SPACE 6,00x3,00	DOOR 5,66x2,40	DOOR 6,00x3,00
SPACE 6,00x3,50	DOOR 5,66x2,90	DOOR 6,00x3,50
SPACE 6,00x4,00	DOOR 5,66x3,40	DOOR 6,00x4,00
SPACE 6,00x4,50	DOOR 5,66x3,90	DOOR 6,00x4,50
SPACE 6,00x5,00	DOOR 5,66x4,40	DOOR 6,00x5,00

OPTIONAL ON REQUEST

CODE

Class 1 fireproof cover

Monochrome screen printing 1000X300H mm

Detection control unit for electromagnetic coil indicator

3x2 mt cable for electromagnetic coil

2x1 mt cable for electromagnetic coil

Emergency outdoor mushroom button

Outdoor opening button (additional)

Outdoor key selector (manual open/close)

Radio-receiver with antenna

Two-channel radio-remote

Outdoor pair of photocells (additional)

Pair of photocell-bearing posts

Traffic light with 2 lights (green-red) 230V led



HEATING AND INDOOR CLIMATE

HANGING HEATING

OIL BURNER



Pre-painted galvanized sheet frame
 Room thermostat
 Stainless steel chimney
 Back exhaust fume exit
 N. 1 90° stainless steel elbow
 N. 2 stainless steel exhaust pipe L: 1,00 met
 N. 1 stainless steel rain cap
 N. 1 cover crossing set

CODE	PRODUCT	DESCRIPTION
FARM 85	SINGLE PHASE- HELICAL	Heat power: 85,6 kW - 73.600 Kcal Output heat: 79,4 Kw - 68.200 Kcal Electrical power: 230V Airflow: 7.000 m ³ /hour Fuel consumption: 6,8 Kg/hour Power consumption: 0,67 kW Flue: ø500mm
FARM 110	SINGLE PHASE- HELICAL	Heat power: 144,7 kW - 124.400 Kcal Output heat: 134,9 kW - 115.900 Kcal Airflow: 1.000 m ³ /hour Fuel consumption: 11,5 Kg/hour Power consumption: 1,57 kW Flue: ø600 mm
FARM 145	SINGLE PHASE- HELICAL	Heat power: 110,5 kW-95.000 Kcal Output heat: 102,5 Kw - 88.100 Kcal Electrical power: 230V Airflow: 8.500 m ³ /hour Fuel consumption: 8,7 Kg/hour Power consumption: 1,19 kW Flue: Ø500 mm
	THREE-PHASE version	Electrical power: 400V

FARM 185SINGLE PHASE-
HELICAL

Heat power: 185,5 kW - 159.500 Kcal
Output heat: 171,7 Kw - 147.100 Kcal
Electrical power: 230V
Airflow: 12.000 m³/hour
Fuel consumption: 14,7 Kg/hour
Power consumption: 1,55 kW

THREE-PHASE
version

Electrical power: 400V

FARM 235SINGLE PHASE-
HELICAL

Heat power: 235,7 kW - 202.700 Kcal
Output heat: 216,9 Kw - 186.500 Kcal
Electrical power: 230V
Airflow: 16.200 m³/hour
Fuel consumption: 18,7 Kg/hour
Power consumption: 2,55 kW
Flue: Ø700 mm

THREE-PHASE
version

Electrical power: 400V

HANGING HEATING

METHANE GAS BURNER



Pre-painted galvanized sheet frame
 Room thermostat
 Stainless steel chimney
 Back exhaust fume exit
 N. 1 90° stainless steel elbow
 N. 3 stainless steel exhaust pipe L: 1,00 met
 N. 1 stainless steel rain cap
 N. 1 cover crossing set

CODE	PRODUCT	DESCRIPTION
FARM 85	SINGLE PHASE- HELICAL	Heat power: 85,6 kW - 73.600 Kcal Output heat: 79,4 Kw - 68.200 Kcal Electrical power: 230V Airflow: 7.000 m ³ /hour Fuel consumption: 7,9 m ³ /hour Power consumption: 0,67 kW Flue: ø500mm
FARM 110	SINGLE PHASE- HELICAL	Heat power: 110,5 kW-95.000 Kcal Output heat: 102,5 Kw - 88.100 Kcal Electrical power: 230V Airflow: 8.500 m ³ /hour Fuel consumption: 10,4 m ³ /hour Power consumption: 1,19 kW Flue: Ø500 mm
FARM 145	SINGLE PHASE- HELICAL	Heat power: 144,7 kW - 124.400 Kcal Output heat: 134,9 kW - 115.900 Kcal Airflow: 11.000 m ³ /hour Fuel consumption: 13,7 m ³ /hour Power consumption: 1,57 kW Flue: ø600 mm
	THREE-PHASE version	Electrical power: 400V

FARM 185

SINGLE PHASE-
HELICAL

Heat power: 185,5 kW - 159.500 Kcal
Output heat: 171,7 Kw - 147.100 Kcal
Electrical power: 230V
Airflow: 12.000 m³/hour
Fuel consumption: 17,4 m³/hour
Power consumption: 1,55 kW
Flue: Ø700 mm

THREE-PHASE
version

Electrical power: 400V

FARM 235

SINGLE PHASE-
HELICAL

Heat power: 235,7 kW - 202.700 Kcal
Output heat: 216,9 Kw - 186.500 Kcal
Electrical power: 230V
Airflow: 16.200 m³/hour
Fuel consumption: 22,1 m³/hour
Power consumption: 2,55 kW
Flue: Ø700 mm

THREE-PHASE
version

Electrical power: 400V

HANGING HEATING

BRUCIATORE A LPG



Pre-painted galvanized sheet frame
 Room thermostat
 Stainless steel chimney
 Back exhaust fume exit
 N. 1 90° stainless steel elbow
 N. 3 stainless steel exhaust pipe
 N. 1 stainless steel rain cap
 N. 1 cover crossing set

CODE	PRODUCT	DESCRIPTION
FARM 85	SINGLE PHASE- HELICAL	Heat power: 85,6 kW - 73.600 Kcal Output heat: 79,4 Kw - 68.200 Kcal Electrical power: 230V Airflow: 7.000 m ³ /hour Fuel consumption: 3,1 m ³ /hour Power consumption: 0,67 kW Flue: ø500mm
FARM 110	SINGLE PHASE- HELICAL	Heat power: 110,5 kW-95.000 Kcal Output heat: 102,5 Kw - 88.100 Kcal Electrical power: 230V Airflow: 8.500 m ³ /hour Fuel consumption: 4,2 m ³ /hour Power consumption: 1,19 kW Flue: ø500mm
FARM 145	SINGLE PHASE- HELICAL	Heat power: 144,7 kW - 124.400 Kcal Output heat: 134,9 kW - 115.900 Kcal Airflow: 11.000 m ³ /hour Fuel consumption: 5,4 m ³ /hour Power consumption: 1,57 kW Flue: ø600 mm
	THREE-PHASE version	Electrical power: 400V

FARM 185

SINGLE PHASE-
HELICAL

Heat power: 185,5 kW - 159.500 Kcal
Output heat: 171,7 Kw - 147.100 Kcal
Electrical power: 230V
Airflow: 12.000 m³ /hour
Fuel consumption: 7,0 m³ /hour
Power consumption: 1,55 kW
Flue: Ø700 mm

THREE-PHASE
version

Electrical power: 400V

FARM 235

SINGLE PHASE-
HELICAL

Heat power: 235,7 kW - 202.700 Kcal
Output heat: 216,9 Kw - 186.500 Kcal
Electrical power: 230V
Airflow: 16.200 m³ /hour
Fuel consumption: 8,8 m³ /hour
Power consumption: 2,55 kW
Flue: Ø700 mm

THREE-PHASE
version

Electrical power: 400V

HANGING HEATING

OIL BURNER



Pre-painted galvanized sheet frame
Room thermostat
Stainless steel chimney
Back exhaust fume exit
N. 1 90° stainless steel elbow
N. 3 exhaust pipe L: 1 mt
N. 1 rain cap
N. 1 cover crossing set

CODE	PRODUCT	DESCRIPTION
CH 100	THREE-PHASE HELICAL	Heat power: 98,5 kW - 84.700 Kcal Output heat: 92,9 Kw - 79.800 Kcal Electrical power: 400V Airflow: 11.000 m ³ /hour Fuel consumption: 7,8 m ³ /hour Power consumption: 2,02 kW Flue: ø500mm
CH 135	THREE-PHASE ELICOIDALE	Heat power: 134,0 kW - 115.200 Kcal Output heat: 121,9 Kw - 104.800 Kcal Electrical power: 400V Airflow: 11.000 m ³ /hour Fuel consumption: 10,6 m ³ /hour Power consumption: 2,02 kW Flue: Ø600 mm

HANGING HEATING

METHANE AND LPG BURNER



Pre-painted galvanized sheet frame
Room thermostat
Stainless steel chimney
Back exhaust fume exit
N. 1 90° stainless steel elbow
N. 3 exhaust pipe L: 1 mt
N. 1 rain cap
N. 1 cover crossing set

CODE	PRODUCT	DESCRIPTION
CH 135	THREE-PHASE HELICAL METHANE	Heat power: 134,0 kW - 115.200 Kcal Output heat: 121,9 Kw - 104.800 Kcal Electrical power: 400V Airflow: 11.000 m ³ /hour Fuel consumption: 12,7 m ³ /hour Power consumption: 2,02 kW Flue: ø600mm
CH 135	THREE-PHASE HELICAL LPG	Heat power: 134,0 kW - 115.200 Kcal Output heat: 121,9 Kw - 104.800 Kcal Electrical power: 400V Airflow: 11.000 m ³ /hour Fuel consumption: 4,9 m ³ /hour Power consumption: 2,02 kW Flue: ø600mm

HANGING HEATING

OIL BURNER



Pre-painted galvanized sheet frame
Room thermostat
Stainless steel chimney
Back exhaust fume exit
N. 1 90° stainless steel elbow
N. 3 exhaust pipe L: 1 mt
N. 1 rain cap
N. 1 cover crossing set

CODE	PRODUCT	DESCRIPTION
BH 50	SINGLE-PHASE HELICAL	Heat power: 49,8 kW - 42.800 Kcal Output heat: 44,4 Kw - 38.150 Kcal Electrical power: 230V Airflow: 4.100 m ³ /hour Fuel consumption: 3,9 m ³ /hour Power consumption: 0,75 kW
BH 100	SINGLE-PHASE HELICAL	Heat power: 99,8 kW - 85.800 Kcal Output heat: 89,9 Kw - 77.200 Kcal Electrical power: 230V Airflow: 7.500 m ³ /hour Fuel consumption: 7,9 m ³ /hour Power consumption: 1,00 kW

HANGING HEATING

METHANE BURNER



Pre-painted galvanized sheet frame
Room thermostat
Stainless steel chimney
Back exhaust fume exit
N. 1 90° stainless steel elbow
N. 3 exhaust pipe L: 1 mt
N. 1 rain cap
N. 1 cover crossing set

CODE	PRODUCT	DESCRIPTION
BH 50	SINGLE-PHASE HELICAL	Heat power: 50,1 kW - 43.070 Kcal Output heat: 45,1 Kw - 38.770 Kcal Electrical power: 230V Airflow: 4.100 m ³ /hour Fuel consumption: 4,6 m ³ /hour Power consumption: 0,80 kW
BH 100	SINGLE-PHASE HELICAL	Heat power: 94,6 kW - 81.380 Kcal Output heat: 85,4 Kw - 73.400 Kcal Electrical power: 230V Airflow: 7.500 m ³ /hour Fuel consumption: 8,7 m ³ /hour Power consumption: 1,20 kW

HANGING HEATING

LPG BURNER



Pre-painted galvanized sheet frame
Room thermostat
Stainless steel chimney
Back exhaust fume exit
N. 1 90° stainless steel elbow
N. 3 exhaust pipe L: 1 mt
N. 1 rain cap
N. 1 cover crossing set

CODE	PRODUCT	DESCRIPTION
BH 50	SINGLE-PHASE HELICAL	Heat power: 50,0 kW - 42.980 Kcal Output heat: 45,2 Kw - 38.900 Kcal Electrical power: 230V Airflow: 4.100 m ³ /hour Fuel consumption: 1,8 m ³ /hour Power consumption: 0,80 kW
BH 100	MONOFASE ELICOIDALE	Heat power: 97,9 kW - 84.190 Kcal Output heat: 88,3 Kw - 75.940 Kcal Electrical power: 230V Airflow: 7.500 m ³ /hour Fuel consumption: 3,6 m ³ /hour Power consumption: 1,20 kW

HANGING HEATING

LPG BURNER



Pre-painted galvanized sheet frame
Room thermostat
Stainless steel chimney
Back exhaust fume exit
N. 1 90° stainless steel elbow
N. 3 exhaust pipe L: 1 mt
N. 1 rain cap
N. 1 cover crossing set

CODE	PRODUCT	DESCRIPTION
EC/S 55	SINGLE-PHASE HELICAL	Heat power: 58,6 kW - 50.400 Kcal Output heat: 52,2 Kw - 45.100 Kcal Electrical power: 230V Airflow: 2.500 m ³ /hour Fuel consumption: 4,6 kg/hour Power consumption: 0,85 kW
EC/S 85	SINGLE-PHASE HELICAL	Heat power: 90,6 kW - 77.900 Kcal Output heat: 80,2 Kw - 68.900 Kcal Electrical power: 230V Airflow: 4.300 m ³ /hour

HANGING HEATING

OIL BURNER



Pre-painted galvanized sheet frame
 Room thermostat
 Stainless steel chimney
 Back exhaust fume exit
 N. 1 90° stainless steel elbow
 N. 3 exhaust pipe L: 1 mt
 N. 1 rain cap
 N. 1 cover crossing set

CODE	PRODUCT	DESCRIPTION
AGRI-P 60	SINGLE PHASE- HELICAL	Heat power: 60,0 kW-51'600 Kcal Output heat: 52,8 kW-45'410 Kcal Electrical power: 230V Airflow: 4'100 m ³ /hour Fuel consumption: 5 kg/hour Power consumption: 0,40 kW Flue: Ø400 mm
AGRI-P 85	THREE-PHASE HELICAL	Heat power: 85,0 kW-73'100 Kcal Output heat: 73,9 Kw-63'590 Kcal Electrical power: 400V Airflow: 5'700 m ³ /hour Fuel consumption: 7,1 kg/hour Power consumption: 0,53 kW Flue: Ø500 mm
	SINGLE-PHASE version	Electrical power: 230V
	2 way exit	
AGRI-P 105	THREE-PHASE HELICAL	Heat power Output heat Electrical power Airflow Fuel consumption Flue

AGRI-P 120THREE-PHASE
HELICAL

Heat power: 115,9 kW-99'700 Kcal
 Output heat: 100,8 Kw-86'680 Kcal
 Electrical power: 400V
 Airflow: 8'300 m³/hour
 Fuel consumption: 9,8 kg/hour
 Power consumption: 1,00 kW
 Flue: Ø600 mm

SINGLE-PHASE
version

Electrical power: 230V

2 way exit

AGRI-P 135THREE-PHASE
HELICAL

Heat power: 137,0 kW-117'800 Kcal
 Output heat: 120,6 Kw-103'716 Kcal
 Electrical power: 400V
 Airflow: 9'500 m³/hour
 Fuel consumption: 11,6 kg/hour
 Power consumption: 1,30 kW

2 way exit

AGRI-P 175THREE-PHASE
HELICAL

Heat power: 175,0 kW-150'500 Kcal
 Output heat: 152,3 Kw-130'930 Kcal
 Electrical power: 400V
 Airflow: 12'500 m³/hour
 Fuel consumption: 14,7 kg/hour
 Power consumption: 1,35 kW
 Flue: Ø600 mm

2 way exit

AGRI-P 225THREE-PHASE
HELICAL

Heat power
 Output heat
 Airflow
 Fuel Consumption
 Flue

2 way exit

MODELS WITH CENTRIFUGAL FAN WILL BE AVAILABLE ON REQUEST FOR A QUANTITY OF AT LEAST 10 UNITS

HANGING HEATING

METHANE BURNER



Pre-painted galvanized sheet frame
 Room thermostat
 Stainless steel chimney
 Back exhaust fume exit
 N. 1 90° stainless steel elbow
 N. 3 exhaust pipe L: 1 mt
 N. 1 rain cap
 N. 1 cover crossing set

CODE	PRODUCT	DESCRIPTION
AGRI-P 60		Heat power: 60,0 kW-51'600 Kcal Output heat: 52,8 kW-45'410 Kcal Electrical power: 230V Airflow: 4'100 m ³ /hour Fuel consumption: 6,4 kg/hour Power consumption: 230V Flue: Ø400 mm
AGRI-P 85	THREE-PHASE HELICAL	Heat power: 85,0 kW-73'100 Kcal Output heat: 73,9 Kw-63'590 Kcal Electrical power: 400V Airflow 5'700 m ³ /hour Fuel consumption: 9,0 m ³ /hour Power consumption: 0,53 kW Flue: Ø500 mm
	SINGLE-PHASE version	Electrical power 230V
	2 way exit	
AGRI-P 105	THREE-PHASE HELICAL	Heat power Output heat Airflow Fuel consumption Power consumption Flue

AGRI-P 120	THREE-PHASE HELICAL	Heat power: 115,9 kW-99'700 Kcal Output heat: 100,8 Kw-86'680 Kcal Electrical power: 400V Airflow: 8'300 m ³ /hour Fuel consumption: 12,3 m ³ /hour Power consumption: 1,00 kW Flue: Ø600 mm
	SINGLE-PHASE version	Electrical power: 230V
	2 way exit	

AGRI-P 135	THREE-PHASE HELICAL	Heat power: 137,0 kW-117'800 Kcal Output heat: 120,6 Kw-103'716 Kcal Electrical power: 400V Airflow: 9'500 m ³ /hour Fuel consumption: 14,5 m ³ /hour Power consumption: 1,30 kW Flue: Ø600 mm
	2 way exit	

AGRI-P 175	THREE-PHASE HELICAL	Heat power: 175,0 kW-150'500 Kcal Output heat: 152,3 Kw-130'930 Kcal Electrical power: 400V Airflow: 12'500 m ³ /hour Fuel consumption: 18,7 m ³ /hour Power consumption: 1,35 kW Flue: Ø600 mm
	2 way exit	

AGRI-P 225	THREE-PHASE HELICAL	Heat power Output heat Airflow Fuel consumption Power consumption Flue

MODELS WITH CENTRIFUGAL FAN WILL BE AVAILABLE ON REQUEST FOR A QUANTITY OF AT LEAST 10 UNITS

HANGING HEATING

LPG BURNER



Pre-painted galvanized sheet frame
Room thermostat
Stainless steel chimney
Back exhaust fume exit
N. 1 90° stainless steel elbow
N. 3 exhaust pipe L: 1 mt
N. 1 rain cap
N. 1 cover crossing set

CODE	PRODUCT	DESCRIPTION
AGRI-P 60		Heat power: 60,0 kW-51'600 Kcal Output heat: 52,8 kW-45'410 Kcal Electrical power: 230V Airflow: 4'100 m ³ /hour Fuel consumption: 2,5 kg/hour
AGRI-P 85	THREE-PHASE HELICAL	Heat power: 85,0 kW-73'100 Kcal Output heat: 73,9 Kw-63'590 Kcal Electrical power: 400V Airflow: 5'700 m ³ /hour Fuel consumption: 7,1 m ³ /hour Power consumption: 0,53 kW Flue: Ø500 mm
	SINGLE-PHASE version	Electrical power: 230V
	2 way exit	
AGRI-P 105	THREE-PHASE HELICAL	Heat power Output heat Airflow Fuel consumption Power consumption Flue

AGRI-P 120

THREE-PHASE
HELICAL

SINGLE-PHASE
version

2 way exit

Heat power: 115,9 kW-99'700 Kcal
 Output heat: 100,8 Kw-86'680 Kcal
 Electrical power: 400V
 Airflow: 8'300 m³/hour
 Fuel consumption: 9,8 m³/hour
 Power consumption: 1,00 kW
 Flue: Ø600 mm

AGRI-P 135

THREE-PHASE
HELICAL

2 way exit

Heat power: 137,0 kW-117'800 Kcal
 Output heat: 120,6 Kw-103'716 Kcal
 Electrical power: 400V
 Airflow: 9'500 m³/hour
 Fuel consumption: 11,6 m³/hour
 Power consumption: 1,30 kW
 Flue: Ø600 mm

AGRI-P 175

THREE-PHASE
HELICAL

2 way exit

Heat power: 175,0 kW-150'500 Kcal
 Output heat: 152,3 Kw-130'930 Kcal
 Electrical power: 400V
 Airflow: 12'500 m³/hour
 Fuel consumption: 14,7 m³/hour
 Power consumption: 1,30 kW
 Flue: Ø600 mm

AGRI-P 225

THREE-PHASE
HELICAL

Heat power
 Output heat
 Airflow
 Fuel consumption
 Power consumption
 Flue

MODELS WITH CENTRIFUGAL FAN WILL BE AVAILABLE ON REQUEST FOR A QUANTITY OF AT LEAST 10 UNITS

HANGING HEATING

ACCESSORIES FOR HANGING THERMOGENERATORS MOD. AGRI-P 60 - AGRI-P 85 - AGRI-P 105

ACCESSORY

Circular entrance panel

Front closing panel

2-way plenum

Delivery panel with adjustable flaps

Support frame AGRI-P

**Support frame AGRI-P with 2-way
plenum**

90° stainless steel elbow

**Stainless steel fume exhaust pipe L=1,0
mt**

Rainproof stainless steel Chinese hat

Pair of sheet crossing flanges

Polyethylene casing per meter

**Electronic room thermostat with digital
display**

**Airtight room thermostat with spiral
sensor**

CO2 enrichment system

HANGING HEATING

ACCESSORIES FOR HANGING THERMOGENERATORS MOD. AGRI-P 120 - AGRI-P 135 - AGRI-P 175 - AGRI-P 225

ACCESSORY

Circular entrance panel

Front closing panel

2-way plenum

Delivery panel with adjustable flaps

Support frame AGRI-P

**Support frame AGRI-P with 2-way
plenum**

90° stainless steel elbow

**Stainless steel fume exhaust pipe L=1,0
mt**

Rainproof stainless steel Chinese hat

Pair of sheet crossing flanges

Polyethylene casing per meter

**Electronic room thermostat with digital
display**

**Airtight room thermostat with spiral
sensor**

CO2 enrichment system

OTHER HANGING THERMOGENERATORS

FUEL BURNER



Munters Protect @ pre-painted galvanized sheet frame
 Room thermostat
 Stainless steel chimney
 Back exhaust fume exit
 N. 1 90° bend
 N. 2 1 m drainpipes
 N. 1 hat
 N. 1 pair of flanges

CODE	PRODUCT	DESCRIPTION
GPmp 100	THREE-PHASE HELICAL GPmp 100	Heat power: 102,0 kW / 88'043 Kcal Output heat: 93,0 Kw / 79'943 Kcal Airflow: 6'600 m ³ /ora Fuel consumption: 9,5 Lt/ora Power consumption: 1,4 kW Flue: ø500mm
GPmp 130	THREE-PHASE HELICAL GPmp 130	Heat power: 129,0 kW / 110'871 Kcal Output heat: 117,0 Kw / 100'120 Kcal Airflow: 7'400 m ³ /hour Fuel consumption: 12,0 m ³ /hour Power consumption: 2,2 kW Flue: Ø500 mm
GPmp 160	THREE-PHASE HELICAL GPmp 160	Heat power: 1157,0 kW / 134'780 Kcal Output heat: 141,0 Kw / 121'030 Kcal Airflow: 9'800 m ³ /hour Fuel consumption: 14,6 m ³ /hour Power consumption: 2,6 kW Flue: Ø600 mm

OTHER HANGING THERMOGENERATORS

METHANE / LPG GAS BURNER



Munters Protect ® pre-painted galvanized sheet frame
 Electronic digital thermostat
 Stainless steel chimney
 Exhaust fume exit on top
 N. 2 90° bends
 N. 3 1 mt. drainpipes
 N. 1 hat
 N. 1 pair of flanges

CODE	PRODUCT	DESCRIPTION	PRICE
GPmp 100	THREE-PHASE	Heat power: 102,0 kW / 88'043 Kcal Output heat: 93,0 Kw / 79'943 Kcal Airflow: 6'600 m ³ /ora Fuel consumption: 9,5 m ³ /ora Methane Fuel consumption: 3,7 m ³ /ora LPG Power consumption: 2,2 kW Flue: ø 500mm	
GPmp 130	THREE-PHASE	Heat power: 129,0 kW / 110'871 Kcal Output heat: 117,0 Kw / 100'120 Kcal Airflow: 7'400 m ³ /ora Fuel consumption: 12,4 m ³ /ora Methane Fuel consumption: 4,8 m ³ /ora LPG Power consumption: 2,2 kW Flue: ø500mm	
GPmp 160	THREE-PHASE	Heat power: 157,0 kW / 134'780 Kcal Output heat: 141,0 Kw / 121'030 Kcal Airflow: 9'800 m ³ /ora Fuel consumption: 14,3 m ³ /ora Methane Fuel consumption: 5,8 m ³ /ora LPG Power consumption: 2,60 kW Flue: ø 500mm	

OTHER HANGING THERMOGENERATORS

ACCESSORIES

COD.	ACCESSORY
-	Stainless steel exhaust pipe Ø150 mm L=1 mt.
-	Stainless steel exhaust pipe Ø200 mm L=1 mt.
-	90° stainless steel elbow Ø150 mm
-	90° stainless steel elbow Ø200 mm
-	Cover crossing set Ø150 mm
-	Cover crossing set Ø200 mm
-	Stainless steel rain cap Ø150 mm
-	Stainless steel rain cap Ø200 mm
20360037	Digital electronic thermostat (TED)
2693200	Polyethylene holed casing Ø500 mm GP100 and GP130
2693300	Polyethylene holed casing Ø600 mm GP160
2692900	Casing fixing kit Ø500 mm
2693000	Casing fixing kit Ø600 mm
2692700	Suspension latch Ø500mm
2692800	Suspension latch Ø600mm



OUTDOOR CONDENSATION HEATING

FUEL BURNER

Pre-painted aluminized sheet frame
Combustion chamber in INOX AISI 430 steel Exchange
elements in INOX AISI 304 steel Antiradiation insulation
Room thermostat
Condensation exhaust siphon
Extraction hook for reticular turbulators
Pressure plug for combustion chamber
Holding seal
Delivery panel
Suction plenum



CODE	PRODUCT	DESCRIPTION
ENERGY/K 60	THREE-PHASE FUEL	Heat power: 68,8 kW - 58'635 Kcal Output heat: 60,1 Kw - 51'715 Kcal Airflow: 4'600 m ³ /hour Fuel consumption: 6,70 Lt/hour Flue: Ø150 mm Power consumption: 1,1 kW
ENERGY/K 105	THREE-PHASE FUEL	Heat power: 115,1 kW - 99'025 Kcal Output heat: 103,5 Kw - 89'020 Kcal Airflow: 8'000 m ³ /hour Fuel consumption: 11,4 Lt/hour Flue: Ø200 mm Power consumption: 2,2 kW
ENERGY/K 160	THREE-PHASE FUEL	Heat power: 175,7 kW - 151'145 Kcal Output heat: 160,3 Kw - 137'845 Kcal Airflow: 11'000 m ³ /hour Fuel consumption: 17,4 Lt/hour Flue: Ø250 mm Power consumption: 3,00 kW

OUTDOOR CONDENSATION HEATING

FUEL BURNER

CODE	PRODUCT	DESCRIPTION
ENERGY/K 220	THREE-PHASE FUEL	Heat power: 246,1 kW - 211'670 Kcal Output heat: 217,1 Kw/186,695 Kcal Airflow: 15'000 Nm ³ /hour Fuel consumption: 24,3 Lt/hour Flue: Ø250 mm Power consumption: 4,0 kW

CODE	PRODUCT	DESCRIPTION
ENERGY/K 320	THREE-PHASE FUEL	Heat power: 349,8 kW - 300'828 Kcal Output heat: 323,9 Kw / 278'575 Kcal Airflow: 21'500 Nm ³ /hour Fuel consumption: 35,1 Lt/hour Flue: Ø300 mm Power consumption: 5,5 kW

CODE	PRODUCT	DESCRIPTION
ENERGY/K 460	THREE-PHASE FUEL	Heat power: 502,0 kW - 432'495 Kcal Output heat: 465,2 Kw / 400'060 Kcal Airflow: 31'000 Nm ³ /hour Fuel consumption: 49,9 Lt/hour Flue: Ø330 mm Power consumption: 9,25 kW

CODE	PRODUCT	DESCRIPTION
ENERGY/K 640	THREE-PHASE FUEL	Heat power: 715,2 kW - 615'045 Kcal Output heat: 648,6 Kw / 602'810 Kcal Airflow: 43'000 Nm ³ /hour Fuel consumption: 70,9 Lt/hour Flue: Ø370 mm Power consumption: 15,0 kW

CODE	PRODUCT	DESCRIPTION
ENERGY/K 970	THREE-PHASE FUEL	Heat power: 1089,8 kW - 937'300 Kcal Output heat: 970,0 Kw / 834'200 Kcal Airflow: 71'000 Nm ³ /hour Fuel consumption: 108,1 Lt/hour Flue: Ø380 mm Power consumption: 11,0x2 kW

OUTDOOR CONDENSATION HEATING

METHANE LPG BURNER

Pre-painted aluminized sheet frame
Combustion chamber in INOX AISI 430 steel
Exchange elements in INOX AISI 304 steel
Antiradiation insulation
Room thermostat
Condensation exhaust siphon
Extraction hook for reticular turbulators
Pressure plug for combustion chamber
Holding seal
Delivery panel
Suction plenum



CODE	PRODUCT	DESCRIPTION
ENERGY/K 60	THREE-PHASE FUEL	Heat power: 68,8 kW - 58'635 Kcal Output heat: 60,1 Kw - 51'715 Kcal Airflow: 4'600 Nm ³ /ora Fuel consumption: 6,70 Lt/ora Flue: Ø150mm Three-phase power consumption: 1,1 kW
ENERGY/K 105	THREE-PHASE FUEL	Heat power: 115,1 kW - 99'025 Kcal Output heat: 103,5 Kw - 89'020 Kcal Airflow: 8'000 Nm ³ /ora Fuel consumption: 11,4 Lt/ora Flue: Ø200mm Three-phase power consumption: 2,2 kW
ENERGY/K 160	THREE-PHASE FUEL	Heat power: 175,7 kW - 151'145 Kcal Output heat: 160,3 Kw - 137'845 Kcal Airflow: 11'000 Nm ³ /ora Fuel consumption: 17,4 Lt/ora Flue: Ø250mm Three-phase power consumption: 3,00 kW

OUTDOOR CONDENSATION HEATING

METHANE LPG BURNER

CODE	PRODUCT	DESCRIPTION
ENERGY/K 220	THREE-PHASE FUEL	Heat power: 246,1 kW - 211'670 Kcal Output heat: 217,1 Kw / 186'695 Kcal Airflow: 15'000 Nm ³ /hour Fuel consumption: 24,3 Lt/hour Flue: Ø250mm Three-phase power consumption; 4,0 kW

CODE	PRODUCT	DESCRIPTION
ENERGY/K 320	THREE-PHASE FUEL	Heat power: 349,8 kW - 300'828 Kcal Output heat: 323,9 Kw / 278'575 Kcal Airflow: 21'500 Nm ³ /hour Fuel consumption: 35,1 Lt/hour Flue: Ø300 mm Power consumption: 5,5 kW

CODE	PRODUCT	DESCRIPTION
ENERGY/K 460	THREE-PHASE FUEL	Heat power: 502,0 kW - 432'495 Kcal Output heat: 465,2 - 400,060 Kcal Airflow: 31'000 Nm ³ /hour Fuel consumption: 49,9 Lt/hour Flue: Ø330 mm Power consumption: 9,25 kW

CODE	PRODUCT	DESCRIPTION
ENERGY/K 640	THREE-PHASE FUEL	Heat power: 715,2 kW - 615'045 Kcal Output heat: 648,6 Kw/602'810 Kcal Airflow: 43'000 Nm ³ /hour Fuel consumption: 70,9 Lt/hour Flue: Ø370 mm Power consumption: 15,0 kW

CODE	PRODUCT	DESCRIPTION
ENERGY/K 970	THREE-PHASE FUEL	Heat power: 1089,8 kW - 937'300 Kcal Output heat: 970,0 kW - 834'200 Kcal Airflow: 71'000 Nm ³ /hour Fuel consumption: 108,1 Lt/hour Flue: Ø380 mm Power consumption: 11,0x2 kW

FUEL TANKS

FUEL STORAGE TANK



Rustproof carbon steel plate, external enamel and anti-roll support saddles.
Ø 400 mm man lids for inspection, fitted with gasket and padlockable rapid fitting joint.
Bottom spillway for periodical cleaning.
Raised external aspiration pipe and fitted with check valve, filter and stopcock.
100% containment basin in carbon steel designed for supporting the roof.

CODE	DESCRIPTION
GE TANK 1,3	Capacity 1300 Lt. Diameter 1100 mm. Length 1470 mm. Self-bearing roof covered with galvanized sheet
GE TANK 2,4	Capacity 2400 Lt. Diameter 1270 mm. Length 2032 mm. Self-bearing roof covered with galvanized sheet
GE TANK 3	Capacity 3000 Lt. Diameter 1430 mm. Length 2000 mm. Self-bearing roof covered with galvanized sheet
GE TANK 5	Capacity 5000 Lt. Diameter 1600 mm. Length 2770 mm. Self-bearing roof covered with galvanized sheet
GE TANK 7	Capacity 7000 Lt. Diameter 1700 mm. Length 3300 mm. Self-bearing roof covered with galvanized sheet
GE TANK 9	Capacity 9000 Lt. Diameter 1900 mm. Length 3330 mm. Self-bearing roof covered with galvanized sheet
GE TANK 10	Capacity 10000 Lt. Diameter 2000 mm. Length 3500 mm. Self-bearing roof covered with galvanized sheet
GE TANK 12	Capacity 12000 Lt. Diameter 2000 mm. Length 4095 mm. Self-bearing roof covered with galvanized sheet
GE TANK 15	Capacity 15000 Lt. Diameter 2000 mm. Length 5095 mm. Self-bearing roof covered with galvanized sheet
GE TANK 20	Capacity 20000 Lt. Diameter 2000 mm. Length 6490 mm. Self-bearing roof covered with galvanized sheet

AIR BLOWER HEATERS



External casing in pre-painted galvanized sheet - Air diffuser with adjustable flaps - 2 or 3 row heat exchanger - Manual release valves - Helical electro-ventilator - Single-phase motor (AZN 12÷63) - Three-phase motor (AZN 72÷93) - IP54 protection - Safety protection grid.

CODE	DESCRIPTION
AZN 12	Thermal power 13,3 kW / 11'450 kcal/h Nominal airflow rate 1'750 Nm ³ /hour
AZN 13	Thermal power 17,3 kW / 14'900 kcal/h Nominal airflow rate 1'550 Nm ³ /hour
AZN 22	Thermal power 17,7 kW / 15'250 kcal/h Nominal airflow rate 2'450 Nm ³ /hour
AZN 23	Thermal power 23,8 kW / 20'450 kcal/h Nominal airflow rate 2'300 Nm ³ /hour
AZN 32	Thermal power 22,0 kW / 18'950 kcal/h Nominal airflow rate 2'800 Nm ³ /hour
AZN 33	Thermal power 28,5 kW / 24'550 kcal/h Nominal airflow rate 2'550 Nm ³ /hour
AZN 42	Thermal power 27,4 kW / 23'550 kcal/h Nominal airflow rate 3'600 Nm ³ /hour
AZN 43	Thermal power 35,4 kW / 31'300 kcal/h Nominal airflow rate 3'400 Nm ³ /hour
AZN 52	Thermal power 31,9 kW / 27'400 kcal/h Nominal airflow rate 3'950 Nm ³ /hour
AZN 53	Thermal power 42,7 kW / 36'750 kcal/h Nominal airflow rate 3'900 Nm ³ /hour
AZN 62	Thermal power 39,1 kW / 33'600 kcal/h Nominal airflow rate 5'200 Nm ³ /hour
AZN 63	Thermal power 52,4 kW / 45'100 kcal/h Nominal airflow rate 4'900 Nm ³ /hour
AZN 72	Thermal power 47,4 kW / 40'800 kcal/h Nominal airflow rate 6'700 Nm ³ /hour
AZN 73	Thermal power 63,0 kW / 40'800 kcal/h DOORta d'aria nominale 6'200 Nm ³ /ora
AZN 82	Thermal power 67,7 kW / 58'200 kcal/h Nominal airflow rate 8'500 Nm ³ /hour
AZN 83	Thermal power 87,8 kW / 75'500 kcal/h Nominal airflow rate 7'700 Nm ³ /hour
AZN 92	Thermal power 88,8 kW / 76'400 kcal/h Nominal airflow rate 12'550 Nm ³ /hour
AZN 93	Thermal power 114,9 kW / 98'800 kcal/h Nominal airflow rate 10'900 Nm ³ /hour

AIR BLOWER HEATERS



CODE	DESCRIPTION
AIR JET 2B 550/2/45	Thermal power 47,4 kW / 40'800 kcal/h Nominal airflow rate 6'700 Nm ³ /hour Casing in white pre-painted sheet RAL9010
AIR JET 2B 550/3/45	Thermal power 63,0 kW / 54'150 kcal/h Nominal airflow rate 6'200 Nm ³ /hour External casing in stainless steel. Casing in white pre-painted sheet RAL9010
AIR JET 2B 600/3/50	Thermal power 67,7 kW / 58'200 kcal/h Nominal airflow rate 8'500 Nm ³ /hour External casing in stainless steel. Casing in white pre-painted sheet RAL9010
AIR JET 2B 700/3/63	Thermal power 87,8 kW / 75'500 kcal/h Nominal airflow rate 7'700 Nm ³ /hour Casing in white pre-painted sheet RAL9010



CODE	DESCRIPTION
THERMOJET TJ 550/2/40	Thermal power 20'000 kcal/h Nominal airflow rate 4'000 m ³ /hour Casing in galvanized sheet Casing in white pre-painted sheet RAL9010
THERMOJET TJ 550/3/40	Thermal power 30'000 kcal/h Nominal airflow rate 4'000 m ³ /ora Casing in galvanized sheet Casing in white pre-painted sheet RAL9010
THERMOJET TJ 600/3/45	Thermal power 45'000 kcal/h Nominal airflow rate 5'000 m ³ /hour Casing in galvanized sheet Casing in white pre-painted sheet RAL9010
THERMOJET TJ 700/3/50	Thermal power 55'000 kcal/h Nominal airflow rate 7'000 m ³ /hour Casing in galvanised sheet Casing in white pre-painted sheet RAL9010

AIR HEATERS



CODE	DESCRIPTION
AE AE 550/2/40	Thermal power 20'000 kcal/h Nominal airflow rate 4'000 m ³ /hour Casing in galvanized sheet Casing in white pre-painted sheet RAL9010
AE AE 550/3/40	Thermal power 30'000 kcal/h Nominal airflow rate 4'000 m ³ /hour Casing in galvanized sheet External casing in stainless steel. Casing in white pre-painted sheet RAL9010
AE AE 600/3/40	Thermal power 40'000 kcal/h Nominal airflow rate 4'200 m ³ /hour Casing in galvanized sheet External casing in stainless steel. Casing in white pre-painted sheet RAL9010
AE AE 700/3/50	Thermal power 50'000 kcal/h Nominal airflow rate 6'000 m ³ /hour Casing in galvanized sheet Casing in white pre-painted sheet RAL9010



CODE	DESCRIPTION
AIR JET 4B 550/2/45	Thermal power 90'000 kcal/h Nominal airflow rate 12'000 m ³ /hour Casing in galvanized sheet Casing in white pre-painted sheet RAL9010
AIR JET 4B 550/3/45	Thermal power 120'000 kcal/h Nominal airflow rate 12'000 m ³ /hour Casing in galvanized sheet External casing in stainless steel. Casing in white pre-painted sheet RAL9010
AIR JET 4B 600/3/50	Thermal power 160'000 kcal/h Nominal airflow rate 16'000 m ³ /hour Casing in galvanized sheet External casing in stainless steel. Casing in white pre-painted sheet RAL9010

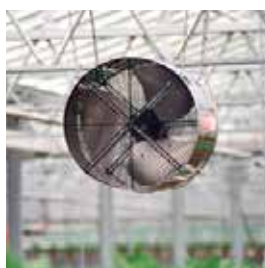
AIR CIRCULATORS



CODE	DESCRIPTION
FJ 18 M	Airflow rate 4'750 m ³ /hour Power consumption 135/164W Electrical power: 230V – 50 Hz Galvanized body
FJ 18 T	Airflow rate 4'750 m ³ /hour Power consumption 190/210W Electrical power: 400V – 50 Hz Galvanized body
FJ 22 M	Airflow rate 8'000 m ³ /hour Power consumption 270/313W Electrical power: 400V – 50 Hz Galvanized body
FJ 22 T	Airflow rate 8'000 m ³ /hour Power consumption 250/295W Electrical power: 400V – 50 Hz Galvanized body
FJ 25 T	Airflow rate 12'050 m ³ /hour Power consumption 330/374W Electrical power: 400V – 50 Hz Galvanized body



CODE	DESCRIPTION
DAE 7000	Airflow rate 6600 m ³ /hour Power consumption 260W Electrical power: 230V – 50 Hz Galvanized body
PROTECTION GRID	For installation <2,70 mt



CODE	DESCRIPTION
ACF 18	Airflow rate 4500 m ³ /hour Power consumption: 122W Electrical power 230V – 50 Hz Galvanized body Double protection net
ACF 21	Airflow rate 7620 m ³ /hour Power consumption 220W Electrical power 380V – 50 Hz Three-phase Galvanized body Double protection net SINGLE-PHASE version
ACF 26	Airflow rate: 13120 m ³ /hour Power consumption: 462W Electrical power: 380V – 50 Hz THREE-PHASE Galvanized body Double protection net SINGLE-PHASE version
RWA TURBO 25	Single-phase centrifugal atomizer Only for ACF26
SAF	RWA atomizer fixing bracket Stainless steel AISI 304 Only for ACF26

AIR CIRCULATORS



GALVANIZED BODY - ALUMINIUM BLADES

CODE	DESCRIPTION
KAP-300	Airflow: 2'900 m ³ /hour Power consumption: 370W / 230V – 50 Hz
KAP-350	Airflow: 5'300 m ³ /hour Power consumption: 370W / 230V – 50 Hz
KAP-400	Airflow: 5'880 m ³ /hour Power consumption: 550W / 230V – 50 Hz
KAP-450	Airflow: 7'800 m ³ /hour Power consumption: 550W / 230V – 50 Hz
KAP-500	Airflow: 9'110 m ³ /hour Power consumption: 750W / 230V – 50 Hz



GALVANIZED BODY - PLASTIC BLADES

CODE	DESCRIPTION
KPP-300	Airflow rate 2'900 m ³ /hour Power consumption 370W / 230V – 50 Hz
KPP-350	Airflow rate 5'300 m ³ /hour Power consumption 370W / 230V – 50 Hz
KPP-400	Airflow rate 5'880 m ³ /hour Power consumption 550W / 230V – 50 Hz
KPP-450	Airflow rate 7'800 m ³ /hour Power consumption 550W / 230V – 50 Hz
KPP-500	Airflow rate 9'110 m ³ /hour Power consumption 750W / 230V – 50 Hz

EMERGENCY HEATING

OTHER EMERGENCY THERMOGENERATORS



DIRECT COMBUSTION MOBILE THERMOGENERATORS – FUEL

N. 4 suspension hooks – Helical fan
Single-phase motor 230V – LPG gas burner (GA)
Flexible gas connector hose 1 mt
Air lack safety pressure switch. block warning light.

CODE	DESCRIPTION
GA30	Output heat kW 25,0 - Kcal 21'500 Fuel consumption LPG 2,5 Kg/hour Airflow 1'700 m ³ /hour
GA95T	Output heat kW 97,0 - Kcal 83'400 Fuel consumption LPG 6,6 Kg/hour Airflow 6'000 m ³ /hour

PELLET HEATING

HOT AIR THERMOGENERATOR



The careful selection and dimension of the materials used allows a high durability and perfect resistance to heat loads.

Usable fuel:
Pellets

Characteristics:
Self-regulating automatic burner with containment basin
Electronic control
Generator body and tube bundle in AISI 304 stainless steel
Base in carbon steel
Base insulation in refractory cement
External walls in powder-coated sheets
Upper plenum with adjustable exits
Storage silos of 1 m³

CODE	THERMAL POWER (KCAL)	THERMAL POWER (KW)	YIELD (%)	AIR CAPACITY (M ³ /H)	FUME EXHAUST (MM)	AIR EXHAUST (MM)	CONSUMPTION (KG//H)	POWER SUPPLY (V)	ABSORPT. (KW)	TANK (MM)
GAP 30	27'500	29,8	>90%	2'200	Ø 200	2xØ200	4-6	220/400	1,5	1500 H 700 L 530 P
GAP 50	42'900	50	>90%	4'000	Ø 200	2xØ200	8-10	220/400	1,75	1500 H 700 L 530 P
GAP 80	73'000	85	>90%	5'000	Ø 200	3xØ180	14-16	400	1,9	1'500 H 700 L 700 P
GAP 100	99'000	115	>87%	6'000	Ø 200	3xØ200	16-20	400	2,5	1'500 H 700 L 530 P
GAP 150	150'000	174,5	>87%	11'000	Ø 220	3xØ250	25-30	400	2,85	1500 H 700 L 530 P
GAP 250	206'400	240	>86%	13'000	Ø 250	3xØ250	35-42	400	3,5	1'500 H 700 L 530 P
GAP 300	258'000	300	>86%	18'500	Ø 300	3xØ300	45-52	400	4,5	1'500 H 700 L 530 P
GAP 400	350'000	407	>85%	25'000	Ø 300	4xØ300	56-68	400	9,0	1'500 H 700 L 530 P
GAP 500	435'000	505	>85%	34'000	Ø 400	4xØ400	80-90	400	12,5	1'500 H 700 L 530 P

PELLET HEATING

HOT AIR THERMOGENERATOR



Hot air generator for heating quickly various types of environments. The careful selection and dimension of the materials used allows a high durability and perfect resistance to heat loads.

Usable fuel:

Pellets
Olive waste (orujo) Nut shells

Characteristics:

Combustion chamber in AISI 430 stainless steel
Axial ventilation
Digital switchboard
External coating in steel panels, internal coating in glass wool
Posterior storage tank

CODE	THERMAL POWER (KCAL)	THERMAL POWER (KW)	YIELD (%)	AIR CAPACITY (M ³ /H)	FUME EXHAUST (MM)	HEAT VOLUME	CONSUMPTION (KG//H)	POWER SUPPLY (V)	ABSORPT. (KW)	TANK (MM)
HL-FA-PP 120	103'200	120	88%	6'500	Ø130	4'200	7,2-23	380	2,94	250
HL-FA-PP 180	154'800	180	88%	10'000	Ø180	6'300	12-30	380	2,94	250
HL-FA-PP 250	215'000	250	90%	24'000	Ø200	8'800	15-48	380	5,5	400
HL-FA-PP 350	301'000	350	91%	32'000	Ø300	12'000	20-67	380	7,9	500
HL-FA-PP 500	430'000	500	91%	40'000	Ø350/500	17'500	29-96	380	18,6	600

SILOS

CODE	TYPE	PELLET	VOLUME (M ³)	HEIGHT (MM)	DEPTH (MM)	WIDTH (MM)	CHARGING
BASE	Vertical	455	0,7	1490	346	1160	Shaft Screw
DOUBLE	Vertical	1040	1,6	1490	700	1160	Shaft Screw
FUNNEL	Funnel	1'755	2,7	2200	1500	1500	Shaft Screw
BIG 3	Rectang.	2'080	3,2	2200	1500	3000	Shaft Screw
BIG 5,5	Rectang.	3'575	5,5	2500	1500	3000	Shaft Screw
BIG 18	Rectang.	11'700	18	2500	2500	6000	Shaft Screw
BIG 50	Rectang.	32'500	50	2500	2500	12000	Shaft Screw

MODEL HL FA-PP COMPARISON BETWEEN PELLET AND TRADITIONAL FUEL COSTS*

CODE	HL FA PP 120	HL FA PP 180	HL FA PP 250	HL FA PP 350	HL FA PP 500
DIESEL					
METHANE					
LPG					
PELLET					

*Figures estimated based on a work cycle of 15h and on the basis of the market costs of the listed fuels: Diesel 1.20 €/l; Methane € 0.97/l; LPG 0.60 €/l; Pellets 0.22 €/kg; Wood chips 0.05 €/kg; Self-produced wood chips 0.02 €/kg (estimate)

BIOMASS HEATING

HOT AIR THERMOGENERATOR

The careful selection and dimension of the materials used allows a high durability and perfect resistance to heat loads.

Usable granular fuel:

Woodchips
Sawdust
Olive waste woodchips
Wooden briquettes
Pellet



Characteristics:

Fireplace grate and containment basin
Electronic control of the combustion with primary and secondary ventilators
Generator body and tube bundle in AISI 304 stainless steel
Base in carbon steel
Base insulation in refractory cement
External walls in powder-coated pickled panels
Upper plenum with adjustable exits
Automatic fuel loader not included

CODE	THERMAL POWER (KCAL)	THERMAL POWER (KW)	YIELD(%)	AIR CAPACITY (M ³ /H)	FUME EXHAUST (MM)	AIR EXIT (MM)	WOODCHIP CONSUMPTION (KG/H)	POWER SUPPLY (V)	ABSORP. (KW)
GCA 30	25'700	29,8	>85%	2'200	Ø 200	2xØ200	7-10	220	1,5
GCA 50	42'900	50	>85%	4'000	Ø 200	2xØ200	13-17	220/400	1,75
GCA 80	73'000	85	>85%	5'000	Ø 200	3xØ180	21-30	400	1,9
GCA 100	99'000	115	>87%	6'000	Ø 200	3xØ200	30-40	400	2,5
GCA 150	150'000	174,5	>87%	11'000	Ø 220	3xØ250	50-60	400	2,85
GCA 250	206'400	240	>86%	13'000	Ø 250	3xØ250	75-82	400	3,5
GCA 300	258'000	300	>85%	18'000	Ø 300	3xØ300	92-102	400	4,5
GCA 400	350'000	407	>85%	25'000	Ø 300	4xØ300	125-140	400	9,0
GCA 500	435'000	505	>85%	34'000	Ø 400	4xØ400	150-180	400	12,5

LOADERS FOR BIOMASS HEATING

AUTOMATIC LOADERS FOR GCA MODEL



Loader to be paired with GCA model generators with electric predisposition through airtight multi-polar plugs.

Characteristics:

Painted sheet structure
Internal material movements through rotating gear motor
Safety valve with flame retention
Rigid auger
Automatic dosage system

Usable granular combustion:

Woodchips
Sawdust
Olive waste woodchips
Pellet

GRANULAR MATERIALS LOADERS: SAWDUST, WOODCHIPS, OLIVE WASTE, PELLETT

CODE	WIDTH (MM)	LENGTH (MM)	HEIGHT (MM)	VOLUME (M ³)
CASC 10	800	800	2000	0,80
CASC 20	1200	1200	2000	1,75
CASC 80	1700	1700	2000	3,50
CASC 100	2200	2200	2000	5,20

LOADERS FOR BIOMASS HEATING

AUTOMATIC LOADERS FOR WOODEN BRIQUETTES

CODE	WIDTH (MM)	LENGHT (MM)	HEIGHT (MM)	VOLUME (M ³)
CA-BRI 01	1000	1500	1500	0,80
CA-BRI 02	1500	2000	1800	2,50
CA-BRI 03	2000	2500	1800	5,10

WOODCHIP HEATING

HOT AIR THERMOGENERATOR



Hot air generator for heating quickly various types of environments. The careful selection and dimension of the materials used allows a high durability and perfect resistance to heat loads.

Usable fuel:

Woodchips Pellet
Olive waste (orujo)
Dry fruit shells

Characteristics:

Combustion chamber in AISI 430 stainless steel
Axial ventilation
Digital switchboard
External coating in steel panels, internal coating in glass wool
Posterior storage tank

CODE	THERMAL POWER (KCAL)	THERMAL POWER (KW)	YIELD (%)	AIRFLOW (M ³ /H)	FUME EXHAUST (MM)	HEATABLE VOLUME	CONSUMPTION (KG/H)	POWER SUPPLY (V)	ABSORP. (KW)	TANK (MM)
HL-FA-PPC-120	103'200	120	88%	6'500	Ø130	4'200	10-34	380	2,94	250
HL-FA-PPC-180	154'800	180	88%	10'000	Ø180	6'300	16-60	380	2,94	250
HL-FA-PPC-250	215'000	250	90%	24'000	Ø180	8'800	21-71	380	5,5	400
HL-FA-PPC-350	301'000	350	91%	32'000	Ø300	12'000	26-100	380	7,9	500
HL-FA-PPC 500	430'000	500	91%	40'000	Ø350/500	17'500	42-142	380	18,6	600

WOODCHIP HEATING

SILOS

€	SCB 0,5	SCB 1,5	SCB 1,8	SCB 5	SCB 7,5	SCB 10	SCB 15	SCB 30	SCP 37	SCP75
Volume (m³)	0,5	1,5	1,8	5	7,5	10	15	30	37	75
Type	Octagonal	Octagonal	Octagonal	Octagonal	Octagonal	Octagonal	Octagonal	Octagonal	Rectangular	Rectangular
Loading type	Crossbow	Crossbow	Crossbow	Crossbow	Crossbow	Crossbow	Crossbow	Crossbow	Comb	Comb
Woodchip (300kg/m³)(kg)	150	450	540	1500	2250	3000	4500	9000	11100	22500
H (mm)	1000	1250	1500	1000	1500	2000	2000	1500	2500	2500
ø (mm)	800	1250	1250	2500	2500	3000	3000	5000	L*P 6000x 2500	L*P 6000x 2500
Motors	NMRV 60+40 HP 0,37	NMRV 75+40 HP 0,55	NMRV 75+50 HP 0,55	NMRV 90+63 HP 0,75	NMRV 90+63 HP 1,00	NMRV 110+63 HP 1,5	NMRV 110+63 HP 1,5	NMRV 110+63 HP 1,0	hydraulic pump + water screw	hydraulic pump + water screw
Boiler voltage	from 115kW to 190kW	250kW	390 kW	optional choice: more than 390 kW						

PRICE

FOCUS

MODEL HL FA-PPC - COMPARISON BETWEEN WOODCHIPS AND TRADITIONAL FUELS COSTS

CODE	HL FA-PPC 120	HL FA-PPC 180	HL FA-PPC 250	HL FA-PPC 350	HL FA-PPC 500
------	---------------	---------------	---------------	---------------	---------------

FUEL

METHANE

LPG

WOODCHIPS

SELF-PRODUCED WOODCHIPS

* Estimated figures based on a 15h work cycle and on the following fuel prices on the market: Diesel 1,20 €/l; Methane 0,97 €/l; GPL 0,60 €/l; Pellet 0,22 €/kg; Woodchips 0,05€/kg; Self-produced woodchips 0,02 €/kg (estimate).

WHEELED PELLET HEATING

HOT AIR THERMOGENERATOR



Wheeled hot air generator for heating greenhouses quickly, equipped with a pellet fuelled blowing burner.
It can easily and constantly be moved, does not need a chimney, only a fume exhaust, even flexible.
The careful selection and dimension of the materials used allows a high durability and perfect resistance to heat loads.

Usable fuel:
Pellet

Characteristics:
Trolleyable, does not need chimney
Blowing burner
Combustion chamber in AISI 430 stainless steel
Axial ventilator (standard) or centrifugal (optional). Available for use with or without canalization.
Digital switchboard
External coating in steel panels, internal coating in glass wool
Customisable storage tank.

CODE	THERMAL POWER (KCAL)	THERMAL POWER (KW)	YIELD (%)	AIR CAPACITY (M ³ /H)	FUME EXHAUST (MM)	HEATABLE VOLUME	CONSUMPTION (KG//H)	POWER SUPPLY (V)	TANK (MM)
TROLLER 85	73'100	85	88	4'300	Ø100	2'100	4-13	220	250
TROLLER 115	99'000	115	91	4'800	Ø130	3'900	7-23	220	250
TROLLER 165	142'000	165	90	7'600	Ø180	5'700	11-36	380	400

FOCUS

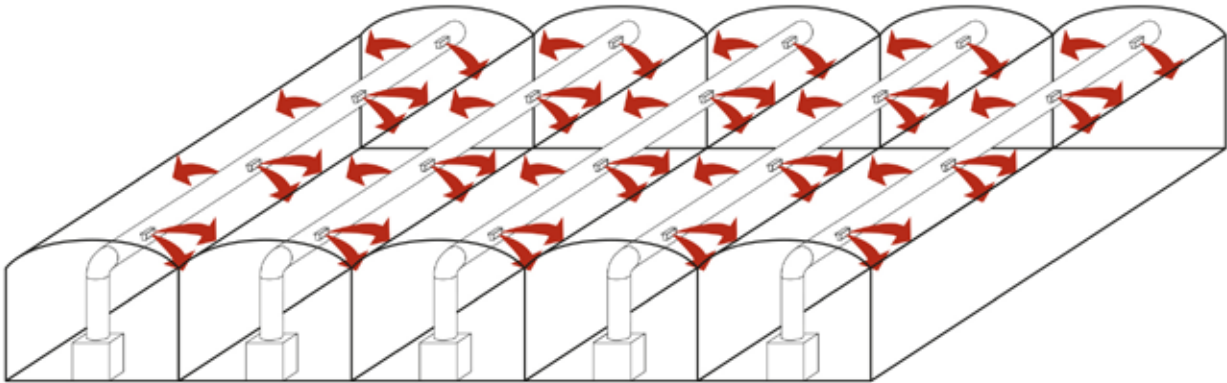
TROLLER PELLET MODEL – COMPARISON BETWEEN PELLET AND TRADITIONAL FUEL COSTS*

CODE	TROLLER PELLET 85	TROLLER PELLET 115	TROLLER PELLET 165
FUEL			
METHANE			
LPG			
PELLET			

* Estimated figures based on a 15h work cycle and on the following fuel prices on the market: Diesel 1,20 €/l; Methane 0,97 €/l; GPL 0,60 €/l; Pellet 0,22 €/kg; Woodchips 0,05€/kg; Self-produced woodchips 0,02 €/kg (estimate).

AIR CANALIZATION

AIR CANALIZATION SYSTEM ORIGINATING FROM THE HOT AIR GENERATOR



CODE

GALVANIZED CIRCULAR PILLAR Ø250 mm

GALVANIZED CIRCULAR PILLAR Ø300 mm

GALVANIZED CIRCULAR PILLAR Ø500 mm



CODE

MICRO-HOLED GALVANIZED PILLAR Ø250 mm

MICRO-HOLED GALVANIZED PILLAR Ø300 mm

MICRO-HOLED GALVANIZED PILLAR Ø500 mm



CODE

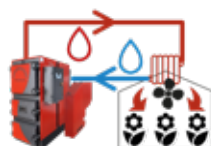
FABRIC MICRO-HOLED PILLAR Ø250 mm

FABRIC MICRO-HOLED PILLAR Ø300 mm

FABRIC MICRO-HOLED PILLAR Ø500 mm

WATER HEATERS

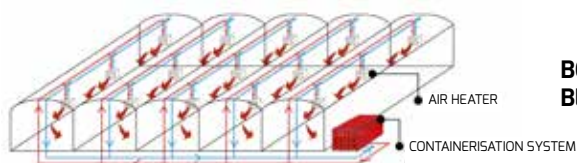
INDUSTRIAL WATER HEATER



As well as biomass hot air generators, we can also provide industrial water heaters. Unlike generators, boilers use the heated water to power any type of heating device (air blower heaters, radiant heating strips, winged heating tubes, ...) to heat the greenhouses constantly and efficiently.

In water heating implants, the system is made of the boiler with its own power supply silo, the accumulation puffer, and the hot water distribution system that powers the air blower heaters or the UTA.

The design and the installation of this type of system becomes very easy thanks to key-in-hand modules that include the boiler and its accessories inside a container system. With this type of product it will be sufficient to position the module and connect it to the greenhouse that needs heating.



BOILER GREENHOUSE TUNNEL HEATING SYSTEM DIAGRAM + AIR BLOWER HEATERS/UTA + RECUPERATOR

OUR WATER MODELS

We provide industrial heaters powered by different types of biomasses, pellet, woodchips, olive waste, dry fruit shells and much more. We have also the possibility to use more atypical fuels thanks to specific regulations or accessories for supply and transportation, so that we can satisfy even the most peculiar needs. Models from 115 kW to 1,4 MW.

VCI -FA PP – Industrial biomass heater powered by pellet and olive waste.

	VCI -FA PP 115	VCI -FA PP 225	VCI -FA PP 250	VCI -FA PP 390	VCI -FA PP 550	VCI -FA PP 800	VCI -FA PP 1.000	VCI -FA PP 1.400
Fireplace nominal voltage (kW)	115	225	250	390	550	800	1.000	1.400
Yield	90%	91,6%	91,6%	91,8%	93%	94%	90,7%	91%
Heatable volume (m³)	2.600	4.860	5.400	8.700	12.300	18.000	22.500	31.300

VCI -FA PPC – Industrial biomass heater powered by woodchips, pellets and olive waste.

	VCI -FA PPC 115	VCI -FA PPC 190	VCI -FA PPC 250	VCI -FA PPC 390	VCI -FA PPC 550	VCI -FA PPC 800	VCI -FA PPC 1.000	VCI -FA PPC 1.400
Fireplace nominal voltage (kW)	115	190	250	390	550	800	1.000	1.400
Yield	91,8%	91,8%	90 %	90%	91%	91%	90 %	90%
Heatable volume (m³)	2.600	4.860	5.400	8.700	12.300	18.000	22.500	31.300

THERMAL SCREEN

AVAILABLE SCREENS CHARACTERISTICS



The "screen" system has the double function of shading and containing energy consumption, avoiding contact between the indoor hot air mass and the outdoor cold air mass, allowing so to adjust the radiating energy that penetrates in the greenhouse.

Longitudinal functioning with screen gathering at the horizontal tie-rod.

Horizontal implant suspended or hanged.

Manual curtain sides or synchronized to the automatic ridge or automatic rollbar.

Gable with manual curtain or automatic rollbar.

Shading screens for different needs of shading and energy saving.

Traction system with steel cables and tubes for dragging the screens.

Zn-al steel and polyester strings with tensioners and hooks for fixing the screens.

Gear motors with box of gears in oil, end-of-stroke

components, fixing plate and chain connectors included.

CODE

ES15	Colour Treatment Standard Width Characteristics Tightening Opzione OPEN	Transparent-aluminium UV-stabilized 4,30m / 5,30m / other sizes upon request Shading 54% - Energy saving 57% 70°C-2h <2% Shading 53% - Energy saving 20%
-------------	---	---

ES16	Colour Treatment Standard Width Characteristics Tightening Opzione OPEN	Transparent-aluminium UV-stabilized 4,30 mt / 5,30 mt / other sizes upon request Shading 65% - Energy saving 62% 70°C-2h <2% Shading 64% - Energy saving 20%
-------------	---	---

ES17	Colour Treatment Standard Width Characteristics Tightening	Trasparent - aluminium UV-stabilized 4,30 mt / 5,30 mt / other sizes upon request Shading 75% - Energy saving 67% 70°C-2h <2%
-------------	--	--

FR60 WHITE	Colour Treatment Standard Width Characteristics Tightening	White - Flame retardant - class B1 UV-stabilized 4,30 mt / 5,30 mt / other sizes upon request Shading 50% - Energy saving 45% 70°C-2h <2%
-----------------------	--	--

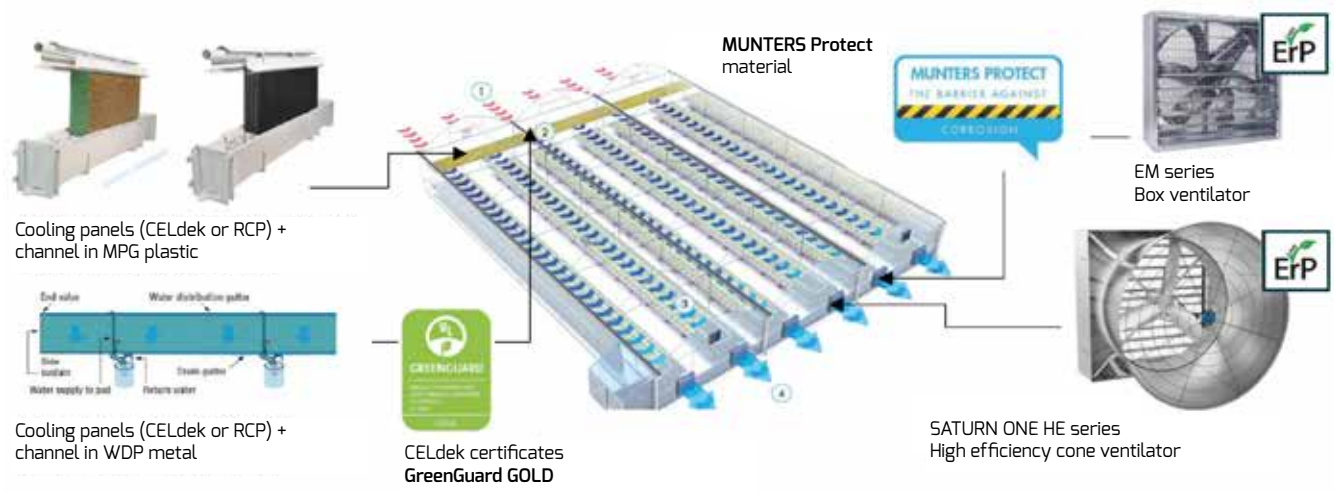
Formilux Outdoor	Colour Treatment Standard Width Characteristics Tightening	Trasparent UV-stabilized 2,30 mt / 2,70 mt Diffused light 80% - Energy saving 50% 70°C-2h <1%
-----------------------------	--	--

COOLING SYSTEM

COOLING PAD & FAN

The pad fan cooling system allows to cool down the greenhouse indoor environment taking advantage of the physical principle of adiabatic saturation. This means that the air is cooled down thanks to the increasing level of its humidity. To take advantage of this process inside the greenhouses one or more evaporative walls are installed, for example at the gable of the greenhouse, and a certain number of extractors at the opposite gable. When the extractors are turned on the outdoor air is drawn inside the greenhouse, it goes through the evaporative panel and through the greenhouse reducing the temperature.

1. Possibility to use Box or Cone ventilators with high energy efficiency
2. Possibility to use different types of evaporative panels based on outdoor conditions and indoor needs
3. Dimensioning service courtesy of the MUNTERS technical department to find the optimal solution.



PANEL TYPE	CHARACTERISTICS
CELLULOSE PANEL CELDEK 7090	<ul style="list-style-type: none"> - Maximum cooling efficiency - High static pressure drop - Optimal for warm and dry climates
CELLULOSE PANEL CELDEK 7060	<ul style="list-style-type: none"> - Reduced cooling efficiency - Low static pressure drop - Optimal for Mediterranean climates
PLASTIC PANEL RCP	<ul style="list-style-type: none"> - Very reduces cooling efficiency - Low static pressure drop - Easy maintenance and cleaning

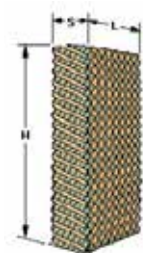
CODE	ADVANTAGES	COMPATIBLE COOLING PANELS
Plastic duct MPG	<ul style="list-style-type: none"> - No need for external tanks - Easy assembly (no glue) - No corrosion (plastic material) - Reduced transport volumes 	Cellulose panel CELdek 7090 - thickness 150mm Cellulose panel CELdek 7060 - thickness 150mm Plastic panel RCP - thickness 150mm
METAL DUCT WDP	<ul style="list-style-type: none"> - Complete system modularity - Can support walls up to 3000mm in height - Available in stainless or pre-painted steel 	Cellulose panel CELdek 7090 - thickness 100/150mm Cellulose panel CELdek 7060 - thickness 100/150mm

COOLING SYSTEM

AVAILABLE TYPES OF EXTRACTORS

PANEL TYPE	CHARACTERISTICS	
BOX EXTRACTOR EM50	Motor 1,0 hp or 1,5 hp Belt transmission Material: Munters Protect 6 blades fan Diameter 50" Certificate Erp	1,0 Hp 1,5 Hp
	CONE EXTRACTOR EC52	Motor 1,0 hp or 2,0 hp Belt transmission Material: Munters Protect 4 blades fan Diameter 52" Certificate Erp
BOX EXTRACTOR ED24/30/36		ED24HE
	Motor 0,5 hp or 0,75 hp Direct transmission Material: Munters Protect 3 blades fan Diameter 24/30/36" Certificate Erp	ED30HE
		ED36HE
CONE SATURN ONE EXTRACTOR	Motor 1,5 hp Belt transmission Material: Munters Protect 3 blades fan Diameter 55" Certificate Erp	

EVAPORATIVE PANEL 7060 / 7090



Evaporative panel for cooling system

CODE

1000x600x100 mm

1500x600x100 mm

1800x600x100 mm

2000x600x100 mm

1000x600x150 mm

1500x600x150 mm

1800x600x150 mm

2000x600x150 mm

1000x600x200 mm

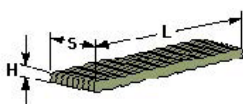
1500x600x200 mm

1800x600x200 mm

2000x600x200 mm

DISTRIBUTION PANEL 70120

Distribution panel for evaporative panel humidification



CODE

30x600x100 mm

50x600x100 mm

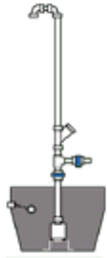
30x600x150 mm

50x600x150 mm

30x600x200 mm

50x600x200 mm

WATER CIRCULATION UNIT



CODE	DESCRIPTION
PUMP 0,33 HP	Submerged single-phase pump 0,33 hp (max 15mt with 100mm / max 10mt with 150mm) Plumbing kit with tapping line
PUMP 0,75 HP	Submerged single-phase pump 0,75 hp (max 24mt with 100mm / max 15mt with 150mm) Plumbing kit with tapping line
CISTERN 300LT	
CISTERN 500LT	
CISTERN 1000LT	
DUCT WITH TUBE DISTRIBUTION	Pre-painted distribution duct with tube made of lower gutter for water gathering, upper gutter, duct lid, duct support, rigid holed tube with support.
PLUMBING KIT	N. 1 for each circulation unit. Made of Ø 40 mm plastic tube, adaptors and quick attachment.
LOWER DUCT SUPPORT KIT	Bracket + duct fixing profile + screws

LATERAL DUCT SUPPORTS

Pre-painted steel lateral duct support.

CODE	
LATERAL 100mm	L = 1205
	L = 1705
	L = 2005
	L = 2205
LATERAL 150mm	L = 1205
	L = 1705
	L = 2005
	L = 2205

COOLING ACCESSORIES

DESERT COOLER



CODE	DESCRIPTION
DCP30 TOP4 (without switchboard)	Pre-painted steel structure Tower with directional flaps Polyethylene water collection tub of 300 Lt. Evaporative panels on 4 sides 30" fan with direct drive motor of 1,5 hp + protection net Water distribution system with 0,1 hp pump Flux straightener For greenhouses of length inferior to 20 mt pair with 4/40 Ø600 mm holed tube For greenhouses with length above 20 mt pair with EDC 18 circulator
SWITCHBOARD	Switchboard for DCP30 TOP 4

AIR CIRCULATORS



CODE	DESCRIPTION
EDC18 GHP	Airflow: 5'260 m ³ /hour Power consumption: 122W Electrical power: 230V-50Hz Stable speed Galvanised body
PROTECTION GRID	For installation <2,70 mt
EDC24 GHP	Airflow: 7'800 m ³ /hour Power consumption: 122W Electrical power: 230V-50Hz Adjustable speed Galvanised body
PROTECTION GRID	For installation <2,70 mt



CULTIVATION SYSTEMS AND ACCESSORIES

CULTIVATION
SYSTEMS AND
ACCESSORIES

BENCHES WITH POLYSTYRENE BOTTOM



Shelf in Danish polystyrene with filter and drain tap.
Lateral sides in aluminium extruded profile H=143 mm
Frame traverses in aluminium extruded profile
Hot-dipped zin-coated stands
Tubular tie-rods in aluminium for bench assembly
Ø60 mm support tubes (and lateral transfer for sliders)
Double roller anti-tipping bracket (for sliders)

FIXED BENCHES

LENGHT

2,00 mt.

2,50 mt.

3,00 mt.

3,50 mt.

4,00 mt.

4,50 mt.

5,00 mt.

5,50 mt.

6,00 mt.

6,50 mt.

7,00 mt.

7,50 mt.

8,00 mt.

8,50 mt.

9,00 mt.

9,50 mt.

10,00 mt.

11,00 mt.

12,00 mt.

BENCHES WITH POLYSTYRENE BOTTOM

SLIDING BENCHES

LENGHT

2,00 mt.

2,50 mt.

3,00 mt.

3,50 mt.

4,00 mt.

4,50 mt.

5,00 mt.

5,50 mt.

6,00 mt.

6,50 mt.

7,00 mt.

7,50 mt.

8,00 mt.

8,50 mt.

9,00 mt.

9,50 mt.

10,00 mt.

11,00 mt.

12,00 mt.

BENCHES WITH NET BOTTOM



Shelf in 30x30x3 mm welded metal net
Lateral sides in aluminium extruded profile H=143 mm
Frame traverses in aluminium extruded profile every 50cm
Hot-dipped zinc-coated stands
Tubular tie-rods in aluminium for bench assembly
Ø60 mm support tubes (and lateral transfer for sliders)
Double roller anti-tipping bracket (for sliders)

FIXED BENCHES

LENGHT

2,00 mt.

2,50 mt.

3,00 mt.

3,50 mt.

4,00 mt.

4,50 mt.

5,00 mt.

5,50 mt.

6,00 mt.

6,50 mt.

7,00 mt.

7,50 mt.

8,00 mt.

8,50 mt.

9,00 mt.

9,50 mt.

10,00 mt.

11,00 mt.

12,00 mt.

BENCHES WITH NET BOTTOM

SLIDING BENCHES

LENGHT

2,00 mt.

2,50 mt.

3,00 mt.

3,50 mt.

4,00 mt.

4,50 mt.

5,00 mt.

5,50 mt.

6,00 mt.

6,50 mt.

7,00 mt.

7,50 mt.

8,00 mt.

8,50 mt.

9,00 mt.

9,50 mt.

10,00 mt.

11,00 mt.

12,00 mt.

ECO BENCHES WITH NET BOTTOM



Shelf in 30x30x3 mm welded metal net
Frame with galvanized aluminium profiles Ø32 mm
Lateral sides profiles Ø32 mm galvanized every 50cm
Feet with support in galvanized Ø32 profile with support plate
Lateral cross tie rods
Lateral finishing corners

FIXED BENCHES

LENGHT

2,00 mt.

3,00 mt.

4,00 mt.

5,00 mt.

6,00 mt.

7,00 mt.

8,00 mt.

9,00 mt.

10,00 mt.

11,00 mt.

12,00 mt.

13,00 mt.

14,00 mt.

15,00 mt.

16,00 mt.

17,00 mt.

18,00 mt.

19,00 mt.

20,00 mt.





CROP LOWERING

Crop lowering system necessary to improve the cultivation inside greenhouses of height above 4,00 mt at the horizontal tie-rod.

This system allows to work on the gable of the plant from the suspension cable during the whole of the production process.

Technical description

N. 10 lowerings per bay of 8,00 mt

N. 12 lowerings per bay of 9,60 mt

N. 16 lowerings per bay of 12,00 mt

N. 16 lowerings per bay of 12,80 mt

Lowering of crops 50-100 cm from the horizontal tie-rod with Genoese chain or galvanized steel lowerings

Suspension hooks for iron cable support every 9,60 mt, anchored to the tie-rod Ø32 mm

Steel cross-section cables at the gables to fix the longitudinal cables

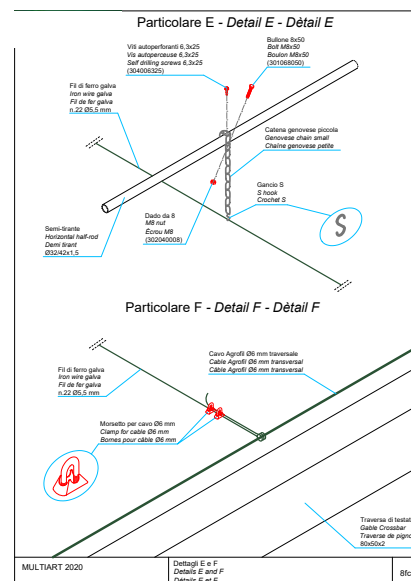
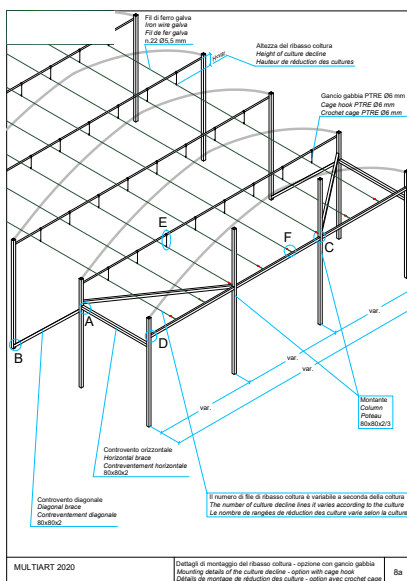
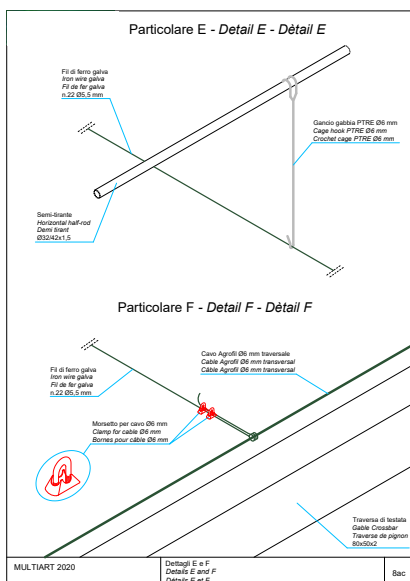
Gables reinforcement

N. 2 struts of 80x80 mm between the 2° pole and gable pillars

N. 2 crossbars of 80x80 mm between the 1° and 2° pole

N. 2 crossbars of 80x80 mm between the 2° and 3° pole

Steel cable (Colour Green)





UP & DOWN SYSTEM

The Up & Down system for the cultivation of soilless strawberries is a method that enables the maximum exploitation of the surface area to be cultivated thanks to the lack of the necessary steps, which enables a high cultivation density to be achieved.

The reciprocal alliance and exchange of opinions between companies that are leaders in their own sectors encourages the development of new knowledge, which would otherwise be unattainable by the individual entity.

This is why Europrogress, Fiberlane Italia, Herbaria, Perlite Italiana and Scarabelli Irrigazione joined forces to develop a completely innovative and original project.

By combining their wealth of experience, the companies in this group developed a "turnkey" project, which offers customers a complete and highly reliable service, based on their professionalism and expertise.

This is how the Up & Down system came into being, a highly technological project, which benefits agricultural producers.

System specifics

Three-phase RW geared motor with Ø32mm drive shaft.

Reduction gears at each pitch to transfer the rotation of the longitudinal drive shaft to the transversal rolling axis

V-shaped truss gutters made by means of a Ø6/8mm knurled rod; connection made with overlap of at least 50 cm between each gutter

Gutters are suspended by steel cables connected to the rolling axis which, by rotating, creates the up/down movement: when the axes rotate, half of the gutters lower while the other half rise in alternate lines, enabling operators to pass between the rows.

Advantages of the Up & Down system:

Double the number of plants per square metre

Adjustment of the gutters to eye level and greater working comfort

Efficient use of resources thanks to economies of scale

Optimisation of harvesting time

Facilitation of harvesting and crop planting activities

Greater exploitation of the density and of the surface area available for cultivation

Up & Down is a mobile system that enables the cultivation gutters to be alternately raised and lowered.

Adjusting the working height to the desired level also facilitates operations.

The installation of the Up & Down system is a bespoke process, **designed and built ad hoc for all project needs.**

The Up & Down system is assembled in greenhouses that have sufficient carrying capacity for the overhead loads, as well as withstanding the actions of local environmental loads.

The Up & Down system can also be installed in existing greenhouses. This is possible after conducting a preliminary study of the structure and preparing a reinforcement project where necessary.

The Up & Down system is suitable for various soilless crops, such as strawberries, lettuce and saffron. **With Up & Down, the greenhouse's crops can be diversified, by planting different crop varieties (also at different times).**

HANGING AND SUSPENDED GUTTERS

Production of hanging and suspended gutters for soilless cultivation.

The profile of each gutter is studied for the required production type, so that the cultivation can be adapted to the needs of the plant, which can be solanaceous plants or small fruits.

Advantages of cultivation in gutters

Possibility of cultivating in dry areas and in areas of poor-quality soil

Optimisation of water consumption by obtaining harmonised irrigation

Optimised use of fertilisers

Direct control of the growth process of the plants

Reduction of the development of plant diseases and parasites Optimisation and improvement of work quality

Gutter characteristics:

Quantity of gutters: 5 (8000) / 6 (9600) / 8 (12800) rows per span

Building material: White polyester painted sheet metal

Height of gutter from soil: approx. 120 cm

Draining plug and closure at extremities

Options: lateral irrigation tube support kit and lateral flap valve for cultivation support



CULTIVATION ACCESSORIES



CODE	DESCRIPTION
MULCHING FILM 100 gr./m²	UV stabilized polyethylene net Colours: black with squares Standard available widths 3,15 - 4,20 - 5,25 mt. Other widths upon request 100 mt. long roll

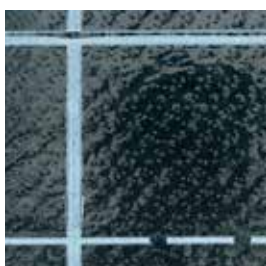
MULCHING FILM 130 gr./m²	UV stabilized polyethylene net Colours: black with squares Standard available widths 3,15 - 4,20 - 5,25 mt. Other widths upon request 100 mt. long roll
--	---



CODE	DESCRIPTION
SUB-IRRIGATION CLOTH ACQUAFLORA	2-layer cloth Mulching film + sub-irrigation cloth Indoor and outdoor use Placed on the ground or on benches Capacity 3 Lt/m ² Roll width 2,00 mt Roll length 50,00 mt



CODE	DESCRIPTION
SUB-IRRIGATION CLOTH	Placed on the ground or on benches Capacity 3 Lt./m ² Roll width 2,00 mt Roll length 50,00 mt



CODE	DESCRIPTION
AQUAPLUS MICROPORE SHEETING	Polyethylene micropore Aquaplus sheeting Roll width 2,00 mt Roll length 50 mt. Commonly used to keep the sub- irrigation cloth clean

CULTIVATION ACCESSORIES



CODE

DESCRIPTION

**TOMATO/
CUCUMBER
CLIP Ø16 HP**

Anti-UV PP
Min. quantity 1 box (18'000 pcs.)

**TOMATO/
CUCUMBER
CLIP Ø23 HP**

Anti-UV PP
Min. quantity 1 box (11'000 pcs.)

**TOMATO/
CUCUMBER
CLIP Ø25 HP**

Anti-UV PP
Min. quantity 1 box (9'000 pcs.)



CODE

DESCRIPTION

**PEPPER
HOLDER**

Anti-UV PP
Min. quantity 1 box (3'000 pcs.)



CODE

DESCRIPTION

**COURGETTE
HOLDER**

Anti-UV PP
Min. quantity 1 box (3'000 pcs.)



CODE

DESCRIPTION

**BERRY CLIP 60
MM**

Anti-UV PP
Min. quantity 3 boxes (2'000 pcs.)

**BERRY CLIP 100
MM**

Anti-UV PP
Min. quantity 3 boxes (1'500 pcs.)

CULTIVATION ACCESSORIES



CODE	DESCRIPTION
------	-------------

Ø32/Ø42 TUBE SUSPENSION HOOKS	L=500 mm
--	----------

Ø32/Ø42 TUBE SUSPENSION HOOKS	L=1000 mm
--	-----------

Ø32/Ø42 TUBE SUSPENSION HOOKS	L=1500 mm
--	-----------

Ø32/Ø42 TUBE SUSPENSION HOOKS	L=2000 mm
--	-----------



CODE	DESCRIPTION
------	-------------

TOMATO HANGING SPROCKET	Hook 18cm – String 10 mt Min. quantity 1 box (600 pcs.)
--	--



CODE	DESCRIPTION
------	-------------

TOMATO SUBSTRATUM	Min. quantity 3600 pcs 100x20 cm – 27 Lt. - ec < 0,7 mS km 50% agrilit 2 granulometry Ø1÷2 mm 50% coconut substratum 10 holes Ø40mm
------------------------------	---



GERMINATION CHAMBERS AND REFRIGERATORS

GERMINATION CHAMBER

Structure made of prefabricated light material with a high insulation coefficient, assembled with appropriate profiles produced by us.

Characteristics:

Placement: indoors

Outdoor temperature: from +40°C to -2°C

Chamber temperature: from +15°C to +28°C

Wall thickness: 100 mm

Various sizes available

Included equipment:

N. 1 sliding door

N. 1 humidification system Indoor light

Heat pump generator

We recommend using decalcified water

REFRIGERATOR

Structure made of prefabricated light material with a high insulation coefficient, assembled with appropriate profiles produced by us.

Characteristics:

Outdoor temperature: from +35°C

Chamber temperature: from +2°C

Placement: indoors

Wall thickness: 100 mm

Various sizes available

Included equipment:

N. 1 sliding door

Indoor light

Cold generator

We recommend using decalcified water

CULTIVATION TROLLEYS



CODE	DESCRIPTION
PRECILIFT P-350	<p>Hydraulic lifting trolley for the processing of tomato grown vertically on a binary tube system.</p> <p>Electrical handling on heating system made on rail tube and concrete floor.</p> <p>Rail distance: to be checked with the customer.</p> <p>Pipe diameter: to be checked with the customer.</p> <p>Joystick control on the platform assure a simplified trolley guidance.</p> <p>Battery charger to be purchased separately.</p>



CODE	DESCRIPTION
WHE-471 v.2020	<p>Electrical handling on heating system made on rail tube and concrete floor. Manual handling on concrete floor. Excellent stability at the maximum height of the platform. Used in the care of greenhouse crops of over 4mt of height. Maximum platform height 4,7 mt. Double pantograph operated by 2 hydraulic cylinders for greater security. Advanced transmission and hydraulic system control. Electronic brake, dynamically reacts to change of working conditions: it guarantees a steady and safe job while driving.</p> <p>Advanced transmission and hydraulic system control. Maneuvering frame with hydraulic control. The control of the maneuvering frame both from the platform and from the control panel is located on the trolley frame. 4 free wheels for simple maneuvers in the greenhouse. Battery charger to be purchased separately.</p>



CODE	DESCRIPTION
ALLTRACK H	<p>Electric and hydraulic trolley for greenhouses with manual platform.</p> <p>Electric lifting and lowering of the platform.</p> <p>Maximum platform height: 293 cm.</p> <p>Joystick control on the platform assure a simplified trolley guidance.</p> <p>Rubber tires.</p> <p>Suitable for slopes not exceeding 2%</p>



CODE	DESCRIPTION
AST-02HR v.2020	<p>Mobile sprayer trolley with hose reel mechanism</p> <p>Main spray boom: 18-24 adjustable nozzles (9-12 double nozzles in main shaft + estensions)</p> <p>Spray bar (6 double nozzles) for the front and back of the path + wall</p> <p>SIEMENS PLC controller, full traction battery</p> <p>Braglia electric valves</p> <p>Rechargeable battery up to 1000-1200 charges</p> <p>12 programs available</p>

CULTIVATION TROLLEYS



CODE	DESCRIPTION
HIGH FREQUENCY BATTERY CHARGER	Automated. IP67 waterproof. Voltage 230V / 50Hz, 24VDC / 20A



CODE	DESCRIPTION
AGRICULTURE BOX 4.0	Working trolleys can take advantage of the agriculture bonus 4.0, after installation of the GPS tool.

CODE	DESCRIPTION
APP SUBSCRIPTION	12 months subscription to the agriculture app 4.0 Cloud web application for job tracking and efficiency report: Work reports and analyses Display of the current and historical GPS position (trace routing) Reports on the trolley status Reports on the current and past operating parameters of the trolley It includes: N.1 SIM card valid for 12 months 1 access to the cloud web application (language: English) in a special subdomain on precimet.pl

CODE	DESCRIPTION
WDZ-09 BASE 1870X420	Designed for the harvesting of greenhouse crops, built in anticorrosive steel, zinc plating and powder coating. Plastic hubs and maneuvering rollers. Hooks and clips to connect the trolleys to each other and tow them.
WDZ-09 BASE 2450X420	Free wheels (easy to maneuver in greenhouses with flat ground) Frame suitable for the operation of the heating pipes.



CODE	DESCRIPTION
WDZ-02 1920x722 cm Weight: 24 kg Maximum charge: 225 kg	Designed for harvesting tomatoes or cucumbers in crates or boxes. To be used on heating pipe system and on concrete ground. Made of steel profile, galvanized and with anticorrosive paint protection. Hand operated trolley. Aluminium wheel hubs and rubber tires. Load capacity 225 kg with 5 boxes of 15kh aligned on each of the 3 rows. Free wheels, easy maneuvers, durability and reliability.





IRRIGATION AND FERTIGATION

IRRIGATION AND
FERTIGATION

HYDROPONICS IRRIGATION



Complete systems for hydroponics crops, both horticulture (tomatoes, cucumbers, peppers, strawberries, small fruits, lettuce ...) and floriculture (roses, anthurium ...), with the use of various inert mediums.

Regarding the specific cultivation of tomato / cucumber / strawberry plants, there are appropriate systems on suspended ducts anchored to the structures; these systems facilitate the maximum cleaning and supervision of the plants, which thanks to this system are born and grow in healthy conditions, limiting the use of phytosanitary treatments. .

In the case of small fruit plants, the same principles used for the ducts are applied, but with appropriately sized containers placed on the ground.

Also, a lot of cut flowers floricultures can be achieved with soil-less techniques in suspended ducts or placed on the ground. The fertigation systems send all the nutrients to the plants, which can be used again creating a closed system and without wasting any water or fertilizers.

SPRINKLING IRRIGATION



Fixed sprinkler systems for greenhouses with soiled crops.

These systems are created with plastic or aluminium hoses, suitable for big surfaces in greenhouses with direct sowing cultivations such as salads, chicory, basil, parsley and other herbs.

High flow sprinklers guarantee an optimal dispersion onto the ground. They are sturdy and simple systems that also allow foliage fertilization by connecting mechanical dispensers or fertigators.

IRRIGATION BARS



These are self-propelled systems capable of releasing water and fertilizers from above.

They are essential systems in case of plant nurseries when the distribution absolutely needs to be even so that there are no differences in plant growth.

The machines have adjustable speed and the possibility to be equipped with different types of sprayers to achieve the optimal dispersion based on the plant types

FERTIGATION UNITS WITH DOSAGE OF A MIX OF FERTILIZERS AND ACIDS WITH THE IRRIGATION WATER IN OPEN TANKS AND DIRECT INLINE INJECTION



As well as guaranteeing the perfect mix of fertilizers, acids and irrigation water, the system of dosing in the mixing tank makes the dosage accurate and stable, even at variable flow rates.

This means that various sectors and different types of fertigation can be connected and the system consequently quickly regulates the mix of acid and fertilizers in the flow thanks to the mixer that acts as a buffer.

The inline dosage system is recommended for irrigation where the various sectors have the same or very similar flow rates and are particularly suitable for continuous use in medium or small systems or for the passive fertigation of flux/reflux tanks, tank filling etc.





WATER TANKS

High quality water tanks are essential for successful crop growing. To ensure that a sufficient volume of water is available to feed the greenhouse complex, we provide prefabricated water tanks.

Main technical characteristics:

- Zinc-coated steel structure made up of lengths of corrugated and bent steel, which are assembled together
- with specifically designed bolts.
- FPP 0.75 mm membrane
- Protective padded film to place between the membrane and the steel structure.
- Cover with anti-weed film fixed by hooks and ropes
- 2" lateral drain
- Internal or external installation
- Anchoring system on stringcourse or on the ground

COD.	Ø MT.	H MT.	CAPACITY M ³
1	1,83	0,76	2,00
2	1,83	1,52	4,00
3	1,83	2,29	6,00
4	1,83	3,05	8,00
5	1,83	3,81	10,00
6	1,83	4,57	12,00
7	2,74	0,76	4,50
8	2,74	1,52	9,00
9	2,74	2,29	13,50
10	2,74	3,05	18,00
11	2,74	3,81	22,50
12	2,74	4,57	27,00
14	3,66	1,52	16,00
15	3,66	2,29	24,00
16	3,66	3,05	32,00
17	3,66	3,81	40,00
18	3,66	4,57	48,00

COD.	Ø MT.	H MT.	CAPACITY M ³
20	4,57	1,52	25,00
21	4,57	2,29	37,50
22	4,57	3,05	50,00
23	4,57	3,81	62,60
24	4,57	4,57	75,10
26	5,49	1,52	36,00
27	5,49	2,29	54,10
28	5,49	3,05	72,10
29	5,49	3,81	90,10
30	5,49	4,57	108,10
32	6,40	1,52	49,00
33	6,40	2,29	73,60
34	6,40	3,05	98,10
35	6,40	3,81	122,60
36	6,40	4,57	147,10
38	7,32	1,52	64,00
39	7,32	2,29	96,10

COD.	Ø MT.	H MT.	CAPACITY M ³
41	7,32	3,81	160,10
42	7,32	4,57	192,20
44	8,23	1,52	81,10
46	8,23	3,05	162,20
47	8,23	3,81	202,70
48	8,23	4,57	243,20
50	9,14	1,52	100,10
51	9,14	2,29	150,10
52	9,14	3,05	200,20
53	9,14	3,81	250,20
54	9,14	4,57	300,30
56	10,06	1,52	121,10
57	10,06	2,29	181,70
58	10,06	3,05	242,70
59	10,06	3,81	302,80
60	10,06	4,57	363,30
62	10,97	1,52	144,10
63	10,97	2,29	216,20
64	10,97	3,05	288,30
65	10,97	3,81	360,30
66	10,97	4,57	432,40
68	11,89	1,52	169,20
69	11,89	2,29	253,70
70	11,89	3,05	388,30
71	11,89	3,81	422,90
72	11,89	4,57	507,50
74	12,80	1,52	196,20
76	12,80	3,05	392,40
77	12,80	3,81	490,50
78	12,80	4,57	588,60
80	13,72	1,52	225,20
81	13,72	2,29	337,80
82	13,72	3,05	450,40
83	13,72	3,81	563,00
84	13,72	4,57	675,20
85	14,63	0,76	128,10
86	14,63	1,52	256,20
87	14,63	2,29	384,40
88	14,63	3,05	512,50
89	14,63	3,81	640,60
90	14,63	4,57	768,70

COD.	Ø MT.	H MT.	CAPACITY M ³
92	15,54	1,52	289,30
93	15,54	2,29	433,90
94	15,54	3,05	578,50
95	15,54	3,81	723,20
97	16,46	1,52	324,30
98	16,46	2,29	486,50
99	16,46	3,05	648,60
100	16,46	3,81	810,80
103	17,37	2,29	542,00
104	17,37	3,05	722,70
105	17,37	3,81	903,30
106	18,29	0,76	200,20
107	18,29	1,52	400,40
108	18,29	2,29	600,40
109	18,29	3,05	800,70
110	18,29	3,81	1000,90
114	19,20	3,05	882,80
116	20,12	1,52	484,50
118	20,12	3,05	968,90
120	21,03	1,52	529,50
121	21,03	2,29	794,20
122	21,03	3,05	1059,00
124	21,95	1,52	576,50
126	21,95	3,05	1153,10
129	22,86	2,29	938,40
130	22,86	3,05	1251,20
134	23,77	3,05	1353,30
137	24,69	2,29	1094,50
139	25,60	1,52	784,70
143	26,52	2,29	1262,70
151	29,62	1,52	1025,0



HOBBY AND GARDEN

HOBBY GREENHOUSES



CODE

DESCRIPTION

PINK 1 ALLUMINIUM

Size 2,00x2,36mt
Gutter height 1,18mt and ridge height 2,25mt
Sliding door 0,77x1,63mt
N. 2 roof windows

PINK 2 ALLUMINIUM

Size 2,00x3,09mt
Gutter height 1,18mt and ridge height 2,25mt
Sliding door 0,77x1,63mt
N. 2 roof windows
Complete cladding in alveolar polycarbonate 8mm

PINK 3 ALLUMINIUM

Size 2,00x3,80mt
Gutter height 1,18mt and ridge height 2,25mt
Sliding door 0,77x1,63mt
N. 2 roof windows
Complete cladding in alveolar polycarbonate 8mm

ALUMINIUM SUNROOMS



CODE

DESCRIPTION

SUNROOM

Aluminium sunrooms placed against the wall or self-bearing
Polycarbonate or glass cladding
Sliding roof system optional
Fixed or sliding glass panels
Separating walls in aluminium

TUNNEL 4,50



Ridge height 2,60 mt
Width 2,00 mt
2 semi-arches Ø32 mm
1 ridge spacer Ø32 mm
4 anti-wind extremities
Single film covering
Woven rope fixing and clip at the gable
Ø42 mm feet with helix



SIZE

Tunnel 4,50x6,00

Tunnel 4,50x8,00

Tunnel 4,50x10,00

Tunnel 4,50x12,00

Tunnel 4,50x14,00

Tunnel 4,50x16,00

Tunnel 4,50x18,00

Tunnel 4,50x20,00

OPTION

Fixed gable with service door

Film cladding
Fixing clip
Swing door 1,00 x 1,90 mt



Removable closed gable

Additional arch Ø32 mm
Film cladding
Fixing clip



TUNNEL HOBBY

TUNNEL 5,00



Ridge height 2,60 mt
 Width 2,00 mt
 2 semi-arches Ø32 mm
 1 ridge spacer Ø32 mm
 4 anti-wind extremities
 Single film covering
 Woven rope fixing and clip at the gable



SIZE	COVERED STRUCTURE PRICE	PRICE 2 SIDE OPENINGS
------	-------------------------	-----------------------

Tunnel 5,00x6,00

Tunnel 5,00x8,00

Tunnel 5,00x10,00

Tunnel 5,00x12,00

Tunnel 5,00x14,00

Tunnel 5,00x16,00

Tunnel 5,00x18,00

Tunnel 5,00x20,00

OPTION

Fixed gable with service door

Film cladding
 Fixing clip
 Swing door 1,00 x 1,90 mt



Removable closed gable

Additional arch Ø32 mm
 Film cladding
 Fixing clip





GARDEN CENTRE BENCHES AND FURNITURE

ECO BENCHES



Frame in aluminium tubular 30x30
 Reinforcement traverses every 30cm
 Support feet in aluminium tubular 35x35mm
 Hard rubber support jack
 Height regulation jackscrew
 Bench edges height 7 cm in natural aluminium
 Fastening 8.8 zinc-coated screws

Special bottom tray in thermoformed polystyrene
 N. 2 drain plugs
 H. 70 cm

SIZES

FIXED

93 x 200 cm

93 x 250 cm

153 x 300 cm

163 x 300 cm (assembly kit)

WITH WHEELS

93 x 200 cm

93 x 250 cm

153 x 300 cm

CLASSIC BENCHES



Frame in aluminium tubular 30x30
Reinforcement traverses every 30cm
Support feet reinforced with 45° traverses
Hard rubber support jack
Height regulation jackscrew
Bench edges height 8 cm in natural aluminium
Fastening 8.8 zinc-coated screws
Special bottom tray in thermoformed polystyrene

N. 2 drain plugs
H. 75 cm

SIZES

FIXED

93 x 200 cm

93 x 250 cm

93 x 300 cm

153 x 200 cm

153 x 250 cm

153 x 300 cm

WITH WHEELS

93 x 200 cm

93 x 250 cm

93 x 300 cm

153 x 200 cm

153 x 250 cm

153 x 300 cm

ECO AND CLASSIC BENCHES: FINISHINGS



THERMO-LACQUERED ALUMINIUM FINISHING

Bench edges height 8 cm in thermo-lacquered aluminium
Colouring based on the classic RAL catalogue

Price on request



WOODEN FINISHING

Bench edges height 8 cm

Price on request

BENCH ACCESSORIES



TWO-LEVEL END SHELVES

Structure in welded aluminium Finishing options:
Natural aluminium and shelf in autoclave treated wood
Natural aluminium with aluminium tray

SIZES

WOOD

90 x 70 h. 25/50 cm

130 x 70 h. 25/50 cm

153 x 70 h. 25/50 cm

185 x 70 h 25/50 cm

ALLUMINIUM

93 x 70 h 38/65 cm

130 x 70 h 25/50 cm

153 x 70 h 38/65 cm

186 x 70 h 38/65 cm



SHELVES RAISER

In welded aluminium and autoclave treated wood
N. 4 bearing shelves 17 cm each

Available models:
Natural aluminium and shelves in autoclave treated wood
Natural aluminium with aluminium tray

SIZE

WOOD

200 x 68 h. 40 cm

250 x 68 h. 40 cm

300 x 68 h. 40 cm

ALLUMINIUM

200 x 70 h. 40 cm

250 x 70 h. 40 cm

300 x 70 h. 40 cm

SIZE

Price tag holder L=200 cm

Price tag holder L=250 cm

Price tag holder L=3 00 cm



CURVED BASKET HOLDER

To be placed on the sides or on the bottom of the bench.
Frame in aluminium tubular with curved upper arch and integrated price tag holder

Available finishings:
Natural aluminium
Thermo-lacquered aluminium – RAL of your choice

SIZES

NATURAL ALUMINIUM, CENTRAL

200 x 90 h. 140 cm

250 x 90 h. 140 cm

300 x 90 h. 140 cm

NATURAL ALUMINIUM, WALL

200 x 90 h. 140 cm

250 x 90 h. 140 cm

300 x 90 h. 140 cm

Thermo-lacquered aluminium finishing price upon request



HOLDER WITH OVERHEAD RACK

In welded aluminium, to be placed on the sides of the bench to display price tags and product information

SIZES

NATURAL ALUMINIUM

LENGHT 200 cm

LENGHT 250 cm

LENGHT 300 cm

WITH SHELF

LENGHT 200 cm

LENGHT 250 cm

Finiture in legno PRICE On request

DISPLAY UNITS



LINEASHOP

Frame in welded and thermo-lacquered aluminium
N. 4 idle wheels with brake
Bottom of the shelves in polystyrene with drain plugs or in autoclave treated wood
Optional varnishing of the structure in RAL colour of your choice
Basket holder arch

SIZES

CENTRAL

Thermoformed shelves
200 x 151/91/41 - h. 225

Autoclave treated wood shelves
200 x 151/91/41 - h. 225 cm

WALL HANGING

Thermoformed shelves
200 x 91/61/41 - h. 225 cm

Autoclave treated wood shelves
200 x 91/61/41 - h. 225 cm



LINEAR

Adjustable shelves thanks to pre-drilled beams to adjust the height
 N. 4 aluminium leak tight bottoms with a drain plug for each shelf
 Optional additional of modules, to create consecutive walls
 Fixed with adjustable feet or 4 idle wheels, 2 of which with brakes
 Natural or thermo-lacquered aluminium finishing

SIZES

WALL HANGING

Natural aluminium
133 x 66 h. 150 cm

Thermo-lacquered Aluminium
133 x 66 h. 150 cm



THREE-STEPS SHELVES

Tubular frame in aluminium
 N. 2 drain plugs
 Special shelves with thermo-formed polystyrene bottom.
 Fixed or mobile with 4 idle wheels (2 of which with brakes)

SIZES

FIXED

200 x 105 h 120 cm - natural aluminium

250 x 105 h 120 cm - natural aluminium

300 x 105 h 120 cm - natural aluminium

200 x 105 h 120 cm - thermo-lacquered Aluminium

250 x 105 h 120 cm - thermo-lacquered Aluminium

300 x 105 h 120 cm - thermo-lacquered Aluminium

200 x 105 h 120 cm - aluminium and wood

250 x 105 h 120 cm - aluminium and wood

300 x 105 h 120 cm - aluminium and wood

Opzional: wheels

Available finishings:

Natural aluminium;
 Thermo-lacquered aluminium in RAL of your choice;
 aluminium and wood.

TRAYS AND LEAK TIGHT BOTTOMS

TRAYS

Thermoformed polystyrene trays

SIZES

110 x 33 cm

120 x 80 cm

126 x 55,5 cm

Custom made



TRAY ACCESSORIES

SIZES

Simple drain tap

HS Ø10 valve / 1/2" drainpipe

Ø10 quick valve / 1/2" or 3/4" drainpipe

300 ml plastic filter

300 ml glue cartridge for polystyrene tray





PRICE LIST

The price list may be amended at any time by Europrogress Srl. The new price list or the amendments made to the same shall have immediate effect from the date of publication on the website, or from the date on which the contractual counterpart was notified.

CONCLUSION OF CONTRACT

The contract shall only be considered as finalised when Europrogress Srl has confirmed in writing that it has received the proposal signed by the customer.

Without said confirmation, we shall not consider the preliminary negotiations as binding even though all terms of the contract have been defined therein. If an advance payment has been agreed, our written confirmation shall only be valid from the date of receipt of the payment.

PRICES

The prices indicated in the price list are in Euro, excluding VAT, subject to amendments.

WARRANTY

The warranty shall be applicable and valid only for the correct and suitable use of the product and/or the goods as agreed and stated in the contract and/or for which they are intended, and on condition that the product and/or goods are located at the site established in the contract and maintained as per the instruction manual contained in the download area of the Europrogress website entitled "Greenhouse Use and Maintenance Manual - IT". With regard to materials produced by other manufacturers, the same warranty acknowledged by the manufacturer will be issued. The warranty for plastic films and cladding sheets varies dependent on the class to which they belong. Climate machinery, inflation motors, switchboards, motors and racks have a warranty according to law (1year). according to law (1 year). The above-cited materials are part of a non-exhaustive list of products. For the warranties of all materials not included on said list, please refer to the warranties acknowledged by the manufacturers.

*The warranty for plastic films and cladding sheets varies dependent on their type and is proportional to the radiation received from the same.

LIABILITY

The inappropriate use or storage of the product by the Customer and/or in any event the use, storage or placement of the product that does not comply with the instructions provided by the manufacturer shall exempt Europrogress srl from any liability whatsoever as regards the deterioration and/or defects and/or faults encountered in the products covered by the contract. If the laying and installation are excluded from the contractual conditions, they shall be the sole responsibility of the Customer, who must arrange for the same independently. Europrogress srl shall be exempt from any liability whatsoever resulting from the laying or installation of the products, if their assembly is not envisaged in the supply contract.

RISKS

The goods shall travel at the purchaser's own risk, even if sold FOB or carriage paid. The goods are not covered by insurance unless formally requested by the purchaser and at the expense of the same, who is responsible for checking the weight, quantity and any damage to the packaging before collection and for indicating any such reservations to the carrier. The seller shall not be liable for the total or partial loss or for the damage.

DELIVERIES

The terms of delivery are always intended in working days, starting from the order confirmation date, and in any event are only indicative. Any delays cannot give rise to claims for damages not to terminations, even if only partial, of the contract. Examples of delays may also include those resulting from delays in the delivery of raw materials by our suppliers, lack of electricity, breakdowns of machinery, general or local or company-wide strikes, and more generally all cases that are not due to the wilful misconduct or negligence of the seller. If any of the above cases should arise, the seller

has the option of reducing the amount of the supply or postponing the delivery date or of terminating the contract, without such giving the buyer any right to any indemnity or compensation whatsoever, with the exception, only in the event of termination, of cases in which the customer shall have the right to the repayment, without interest, of any amount paid in advance.

CLAIMS

Any claims and/or disputes must be received by Europrogress srl within and not later than 8 days from receipt of the goods. In the event of a claim that regards justified faults and/or defects present at the time of delivery, and attributable to us, we undertake to replace the defective articles or parts, but excluding any other obligation to compensate or indemnify the purchaser. Once the material has been accepted, even if on behalf of public entities, the purchaser's right to all and any further claim or report of faults is considered lapsed, with the exception of the warranty envisaged by law.

PAYMENTS

The payment of the agreed price must be made net of any expense, discount or duties for cash, at the domiciled address of the seller on the due dates established. The late payment, by more than ten days but less than thirty with respect to the due date established in the contract, shall authorise the seller to issue a bank draft and to request the repayment of all expenses plus arrears interest at a rate of 3% per annum above the current bank discount rate. A late payment exceeding thirty days from the due date established in the contract shall give at any time, also subsequently, the right to retain the contract terminated, with the right to request payment of the amount due, plus arrears interest calculated as stated above. Failure to meet the payment terms, which shall always be considered essential, and shall also lead to formal notice, from the date on which the first payment due date was defaulted on, and shall give the seller the above-cited rights, excluding any assessment of the greater or lesser validity of the default. The acceptance of payments on account by the seller as regards payments not made according to the terms does not represent the purchaser's full settlement of the debt.

FORCE MAJEURE

Europrogress srl shall not be held liable for a delay in deliveries or for the failure to meet its obligations due directly or indirectly to force majeure events that are not attributable to the same.

EXPRESS CANCELLATION CLAUSE

All of the conditions are considered essential and represent a single framework whereby, by express agreement, the infringement of even one condition by the buyer shall give the seller the right to consider the contract terminated pursuant to art. 1456 of the Italian civil code, without assessment of the greater or lesser severity of the default.

JURISDICTION

The Court of Modena has sole jurisdiction over any dispute regarding the execution, interpretation and termination of this contract.

THANK YOU TO OUR PARTNERS

COVERING AND INFLATION



CLADDING



RENOLIT

OPENINGS AND AUTOMATION CONTROL



STRUCTURAL PARTS



DOORS



HEATING AND INDOOR CLIMATE



IRRIGATION AND FERTIGATION



HOBBY AND GARDEN



AFFILIATE PARTNERS



OUR PARTNERS



NOTES



NOTES





Europrogress S.r.l.

Via per Concordia, 20 - 41037 Mirandola (MO)

Tel. +39.0535.26090 - Fax +39.0535.26379

info@europrogress.it



www.europrogress.it